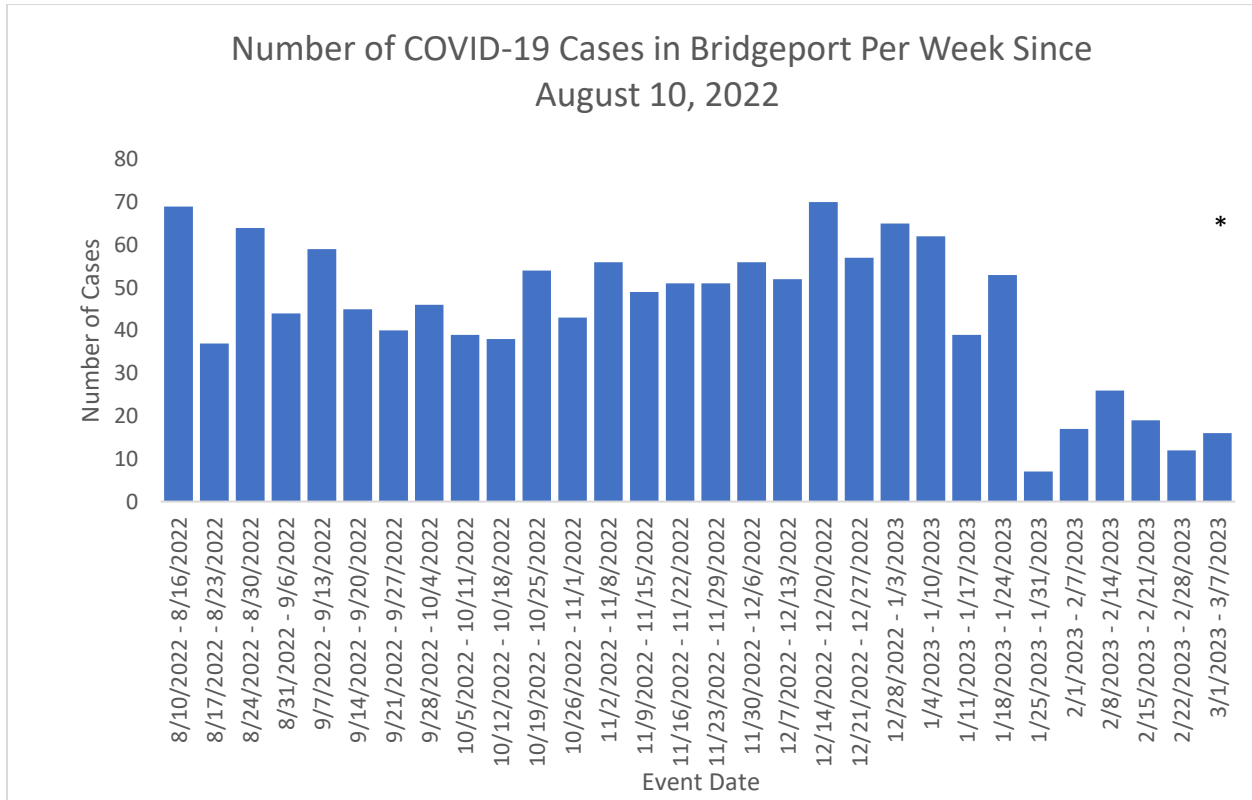
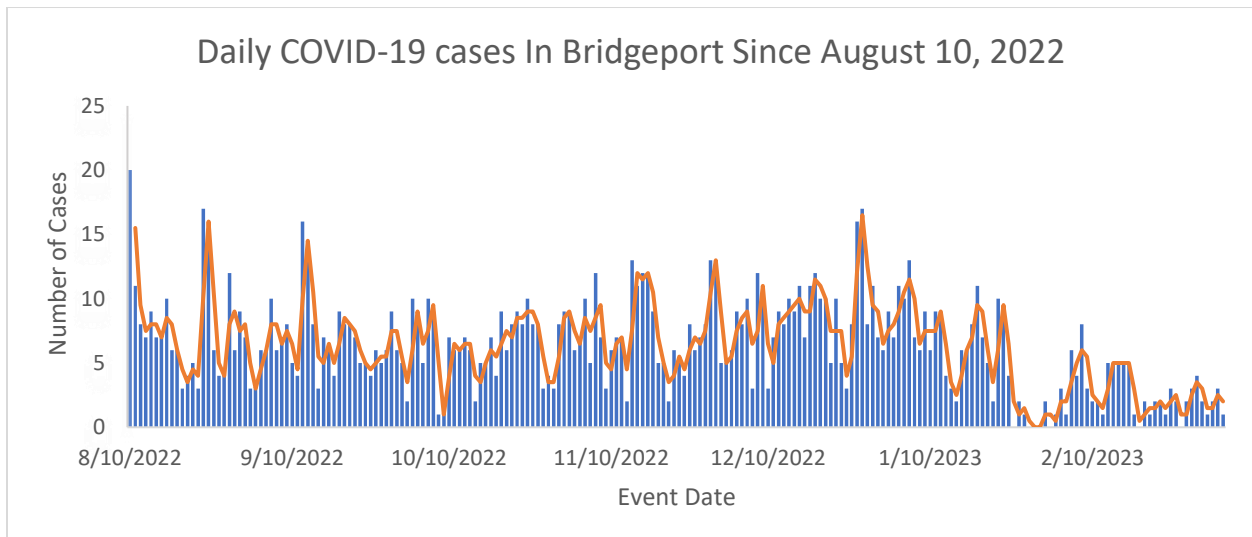




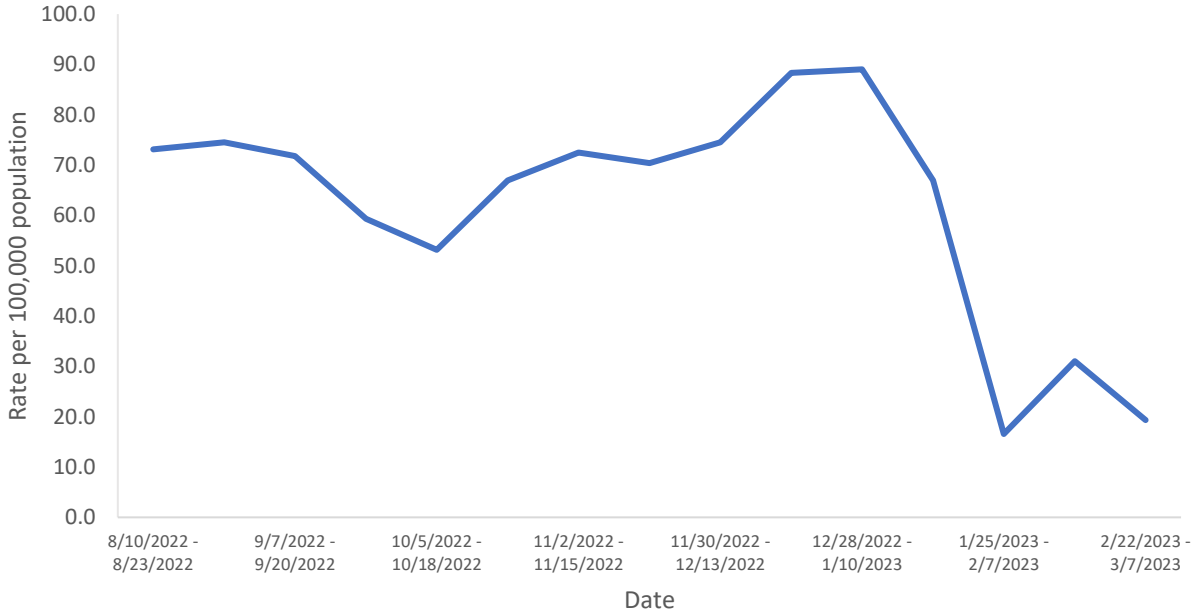
BRIDGEPORT COVID-19 EPIDEMIOLOGY REPORT AS OF 03/07/2023



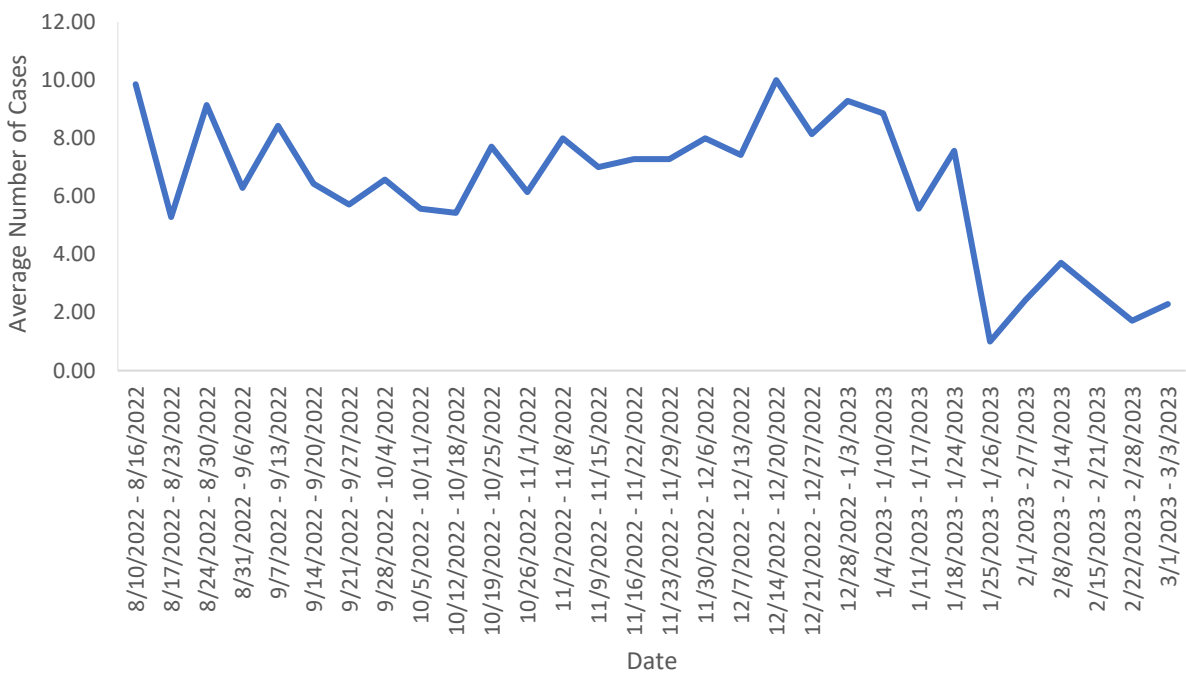
* Data are incomplete



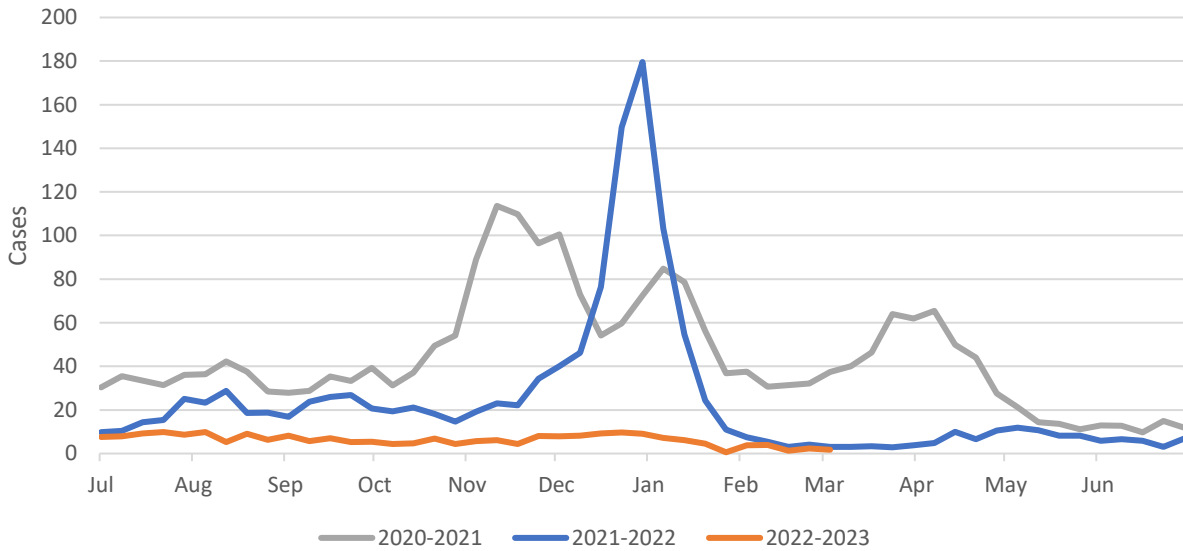
Bridgeport Bi-weekly COVID-19 Incidence Rate Per 100,000 Since August 10, 2022



Seven Day Average COVID-19 Cases in Bridgeport Since August 10, 2022

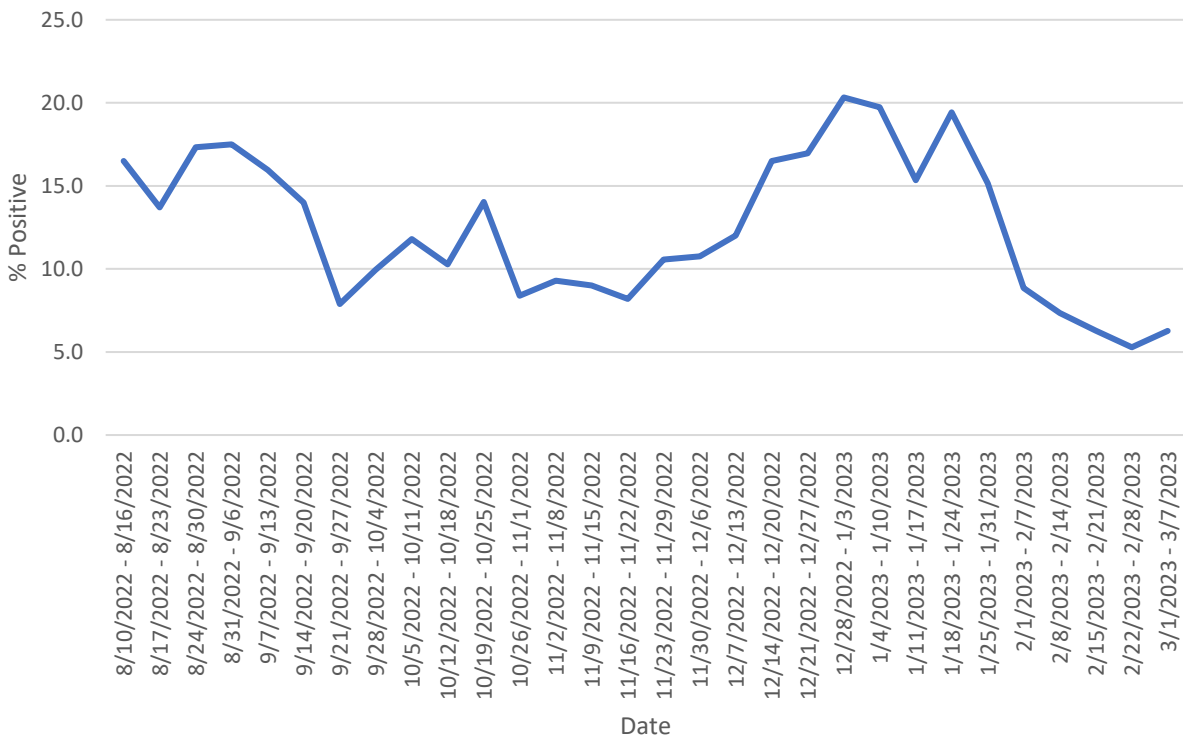


Weekly Average COVID-19 Cases for Bridgeport, CT Since July 1, 2020

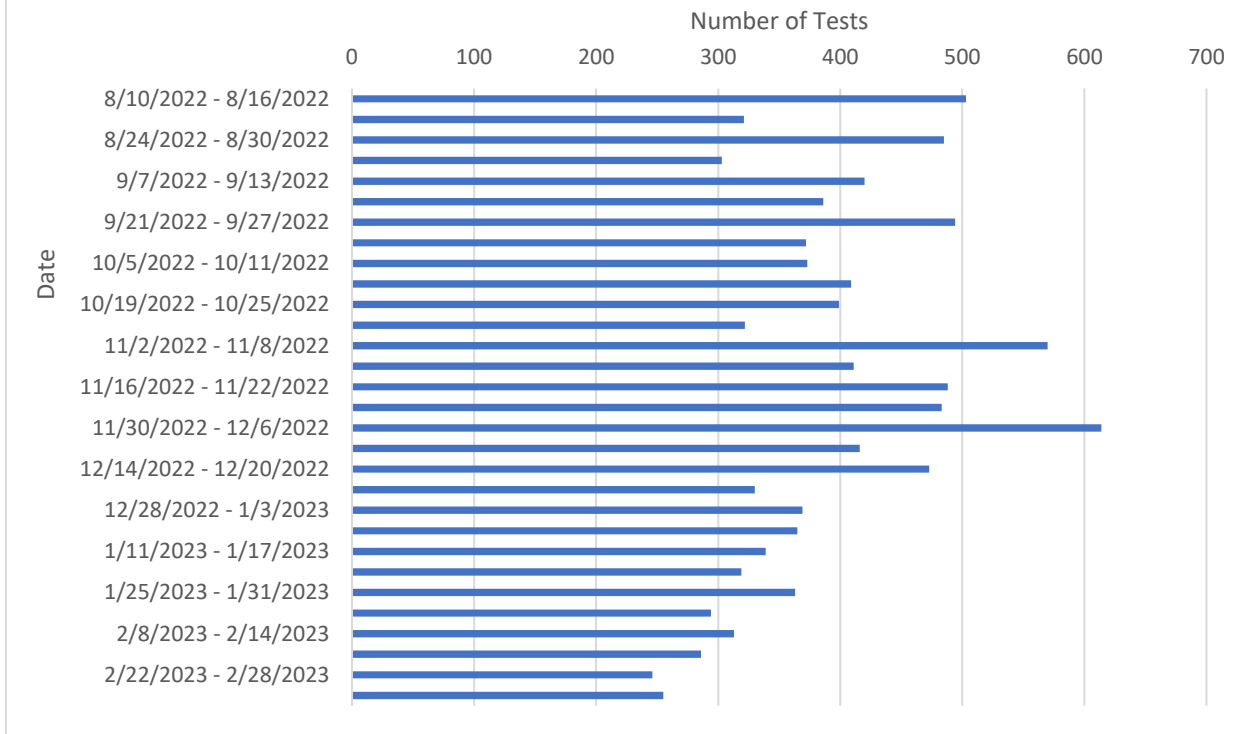


TESTING & TEST POSITIVITY

Seven Day Rolling Average Percentage Positive Tests for COVID-19 in Bridgeport Since August 10, 2022

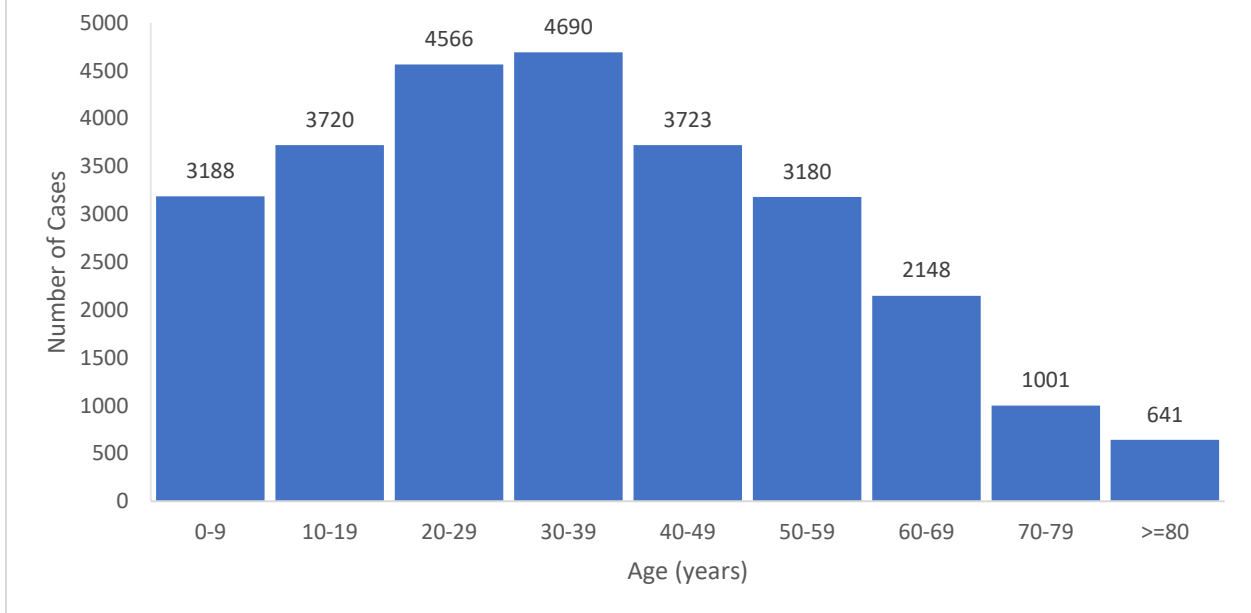


Total COVID-19 Tests Per Week in Bridgeport Since August 10, 2022

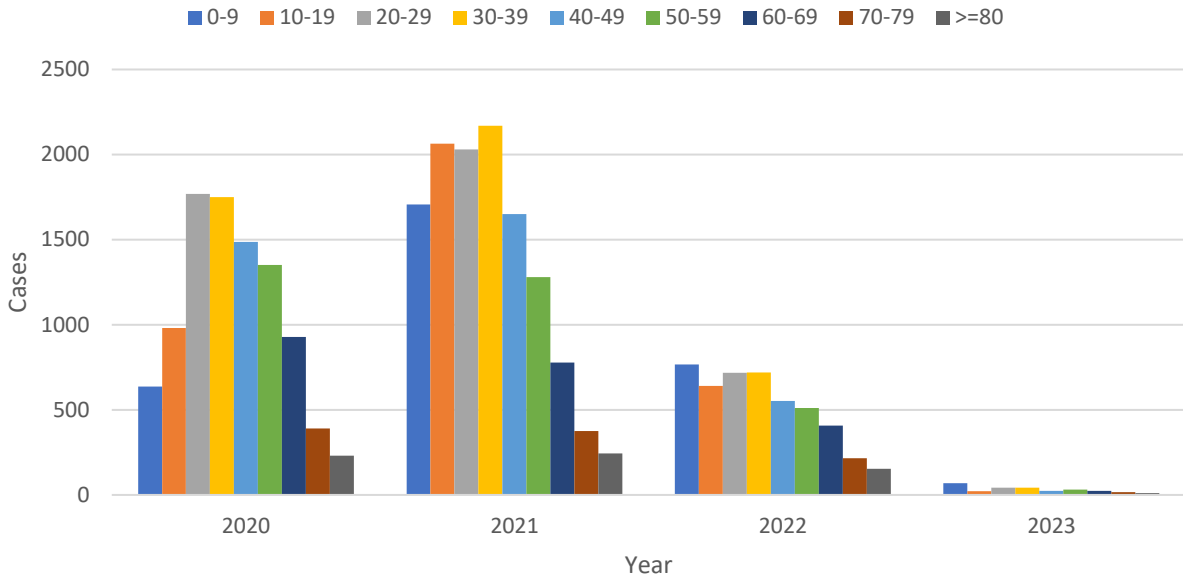


CASES BY AGE

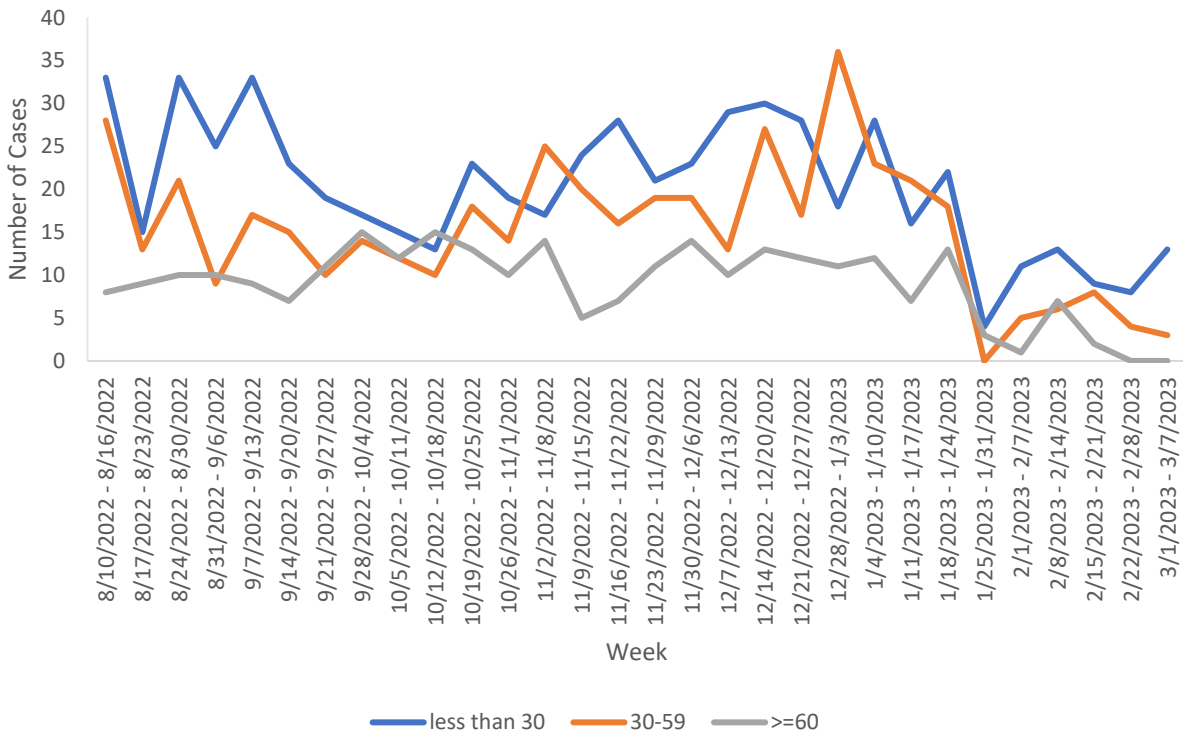
Number of COVID-19 Cases in Bridgeport by Age Group Since July 1, 2020



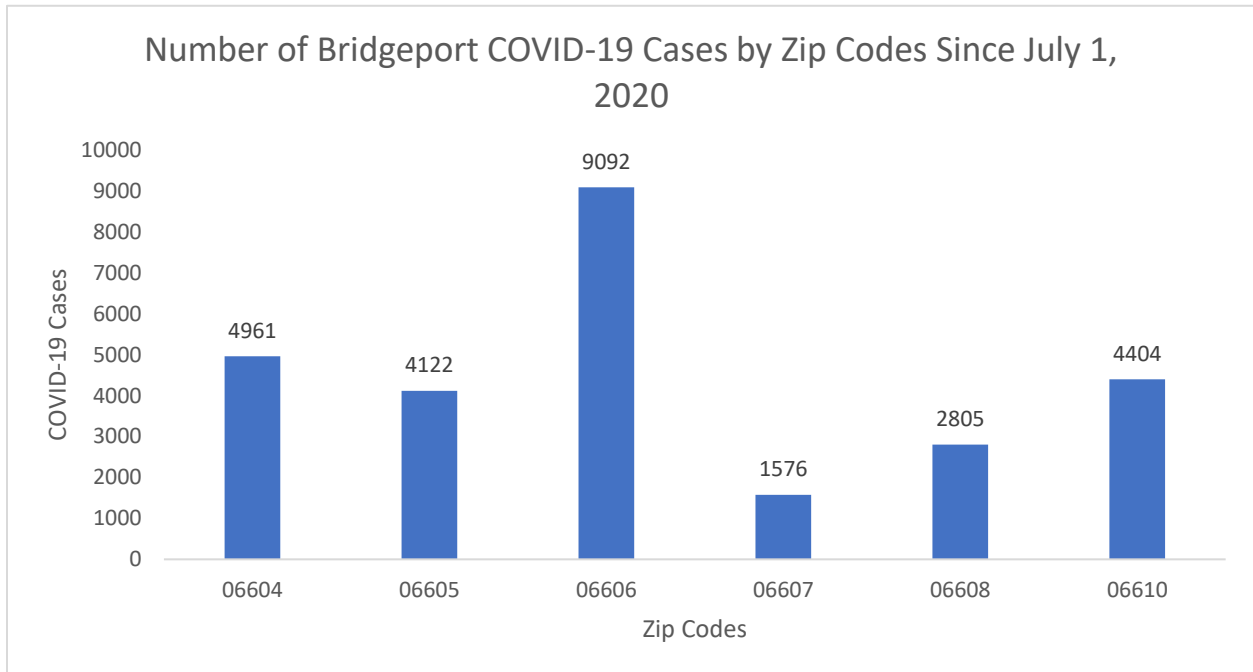
Yearly Number of COVID-19 Cases in Bridgeport by Age (in years)
Since July 1, 2020



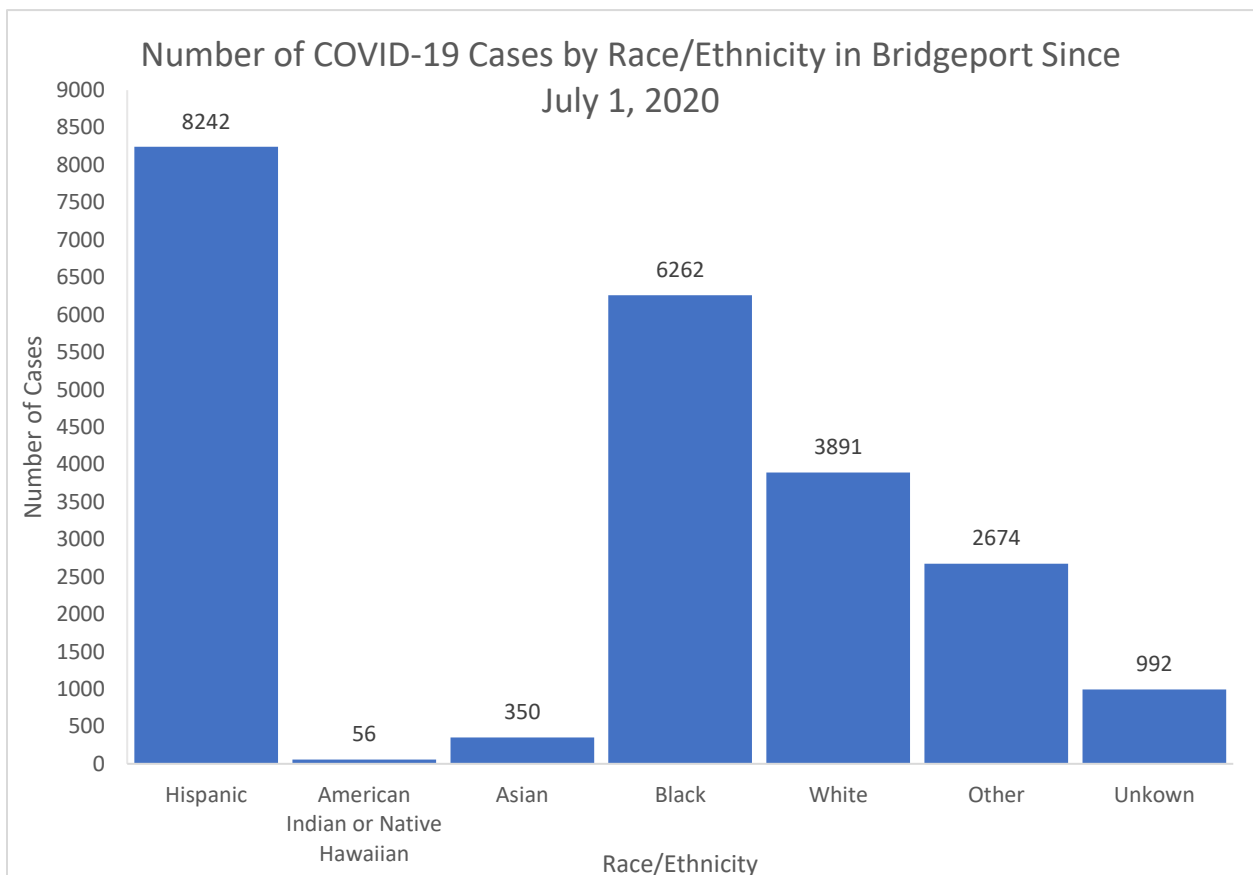
Number of COVID-19 Cases per Week by Age Group in
Bridgeport
Since August 10, 2022



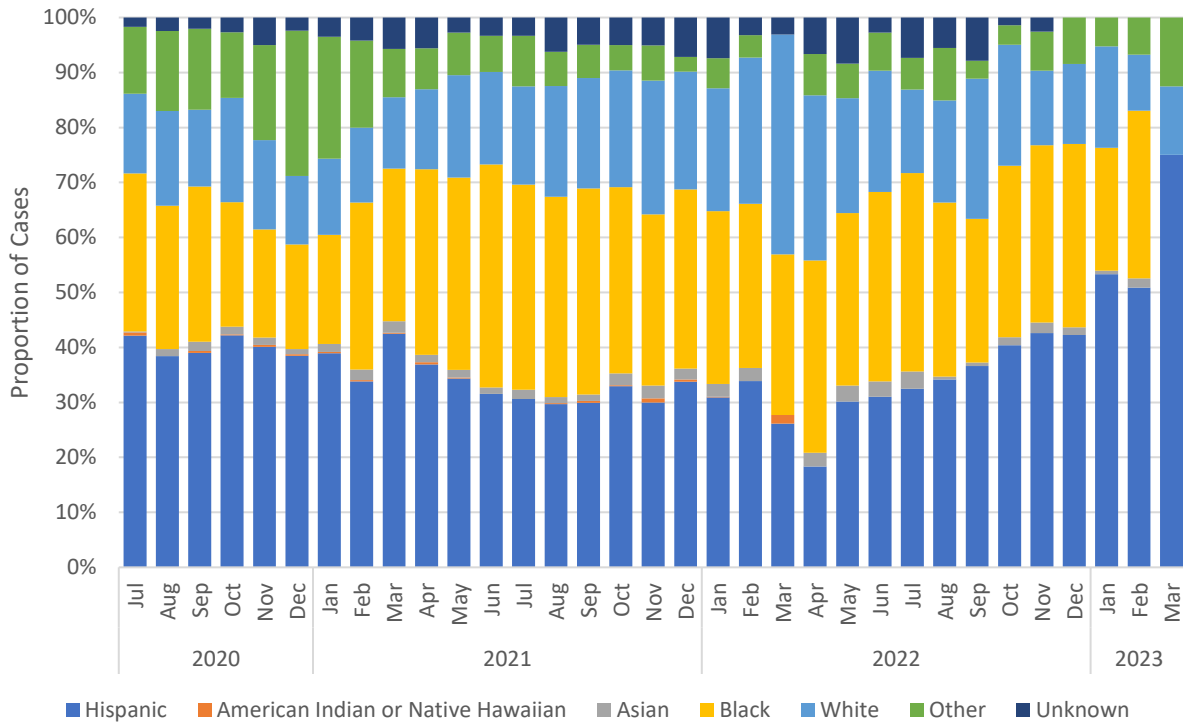
CASES BY ZIP CODE



CASES BY RACE/ETHNICITY

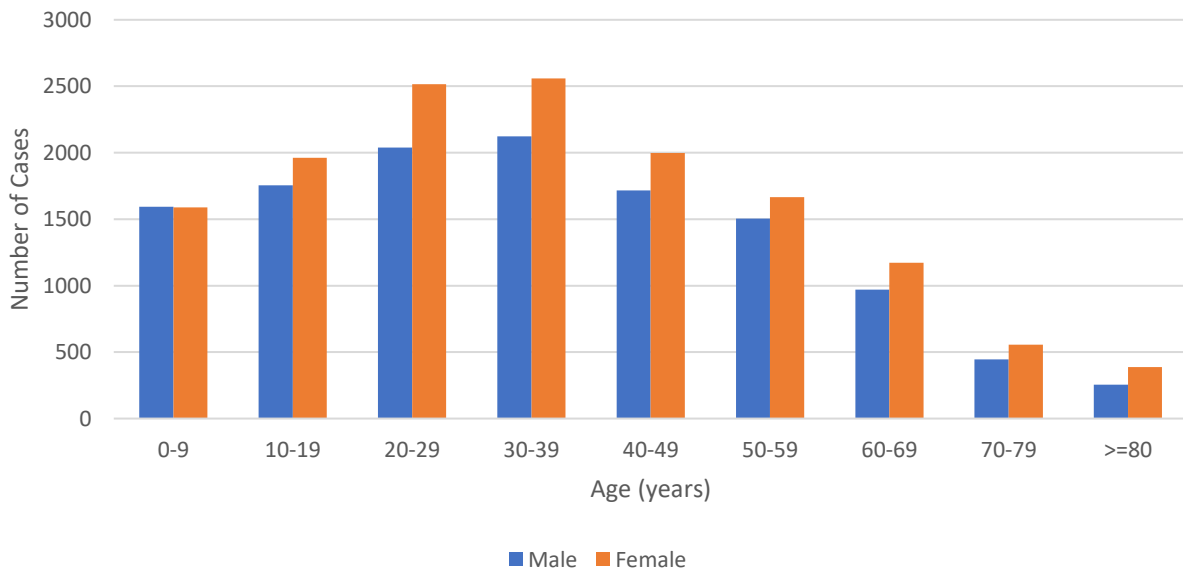


Monthly Proportion of COVID-19 Cases by Race/Ethnicity Since July 1, 2020

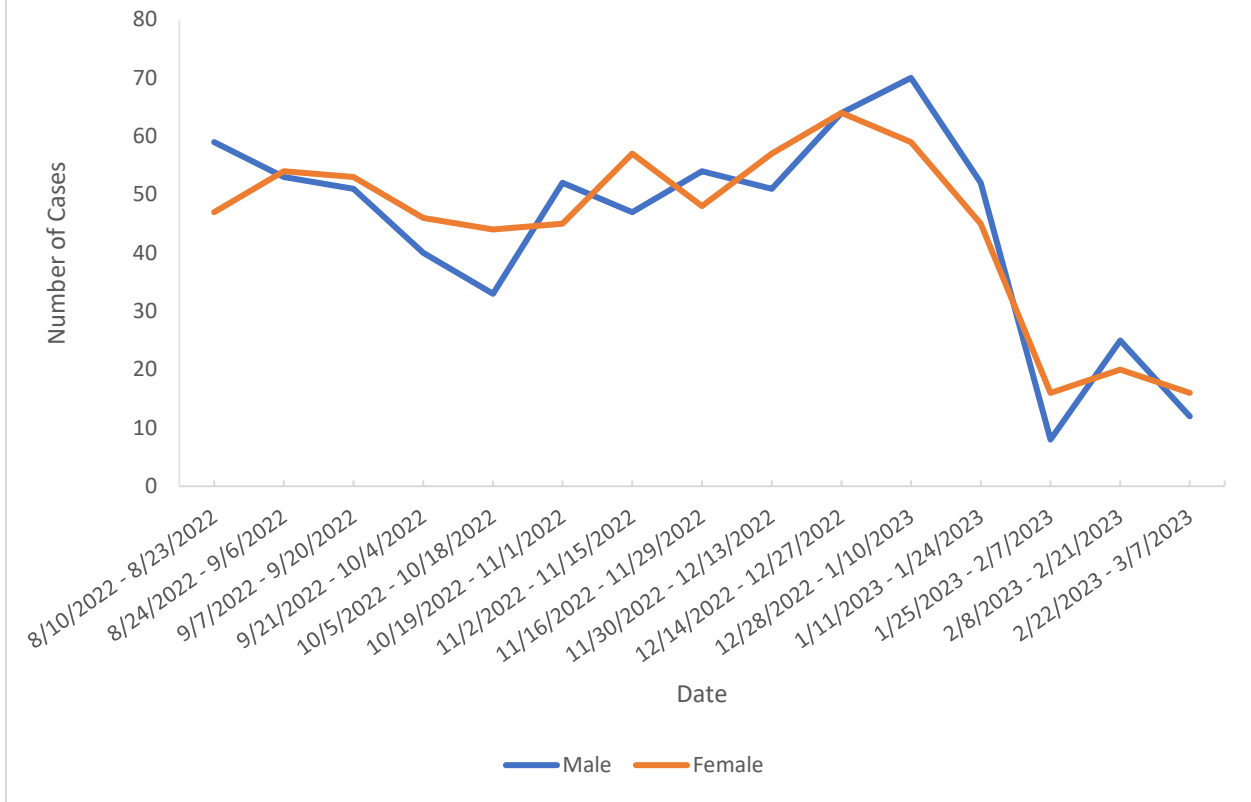


CASES BY GENDER

Number of COVID-19 Cases by Gender, Grouped by Age, Since July 1, 2020



Number of COVID-19 Cases by Gender in Bridgeport Since August 10, 2022



SUMMARY

Since the week of January 25, 2023, Bridgeport, CT has experienced a significant reduction in the number of new COVID-19 cases reported. Prior to this date, the weekly incidence of new cases varied from 50-70, whereas after this date, the incidence ranged from 10-30. This decline is also reflected in the daily incidence of new cases, which has not exceeded 10 cases in a single day. The biweekly incidence rate of COVID-19 for the current reporting period stands at 19.3 per 100,000, representing a decrease from the previous reporting period's rate of 31.1 per 100,000. The seven-day average of reported cases has been steady between 1 and 3 cases per week for the past 6 weeks. In comparison to previous years, the current level of COVID-19 cases is comparable to the figures reported at this time in 2022, and lower than those reported in 2021.

The seven-day rolling average of percent positive tests has remained marginally above 5% for the past 3 weeks, which is a decrease from the recent high of 19.4% reported for the week ending on January 24, 2023. Furthermore, the number of COVID-19 tests reported has been gradually decreasing since the beginning of the year, thereby reducing the reliability of percent positivity data. This decrease in reported tests is attributed to the limited capturing of home testing data, which is essential to provide a comprehensive picture of the level of community transmission.

To date, the 0-9 year age group has the highest number of cases, with the next highest in the 30-39 year age group, followed by the 20-29 year age group. While it is early in the year, this is similar to the age distribution seen

in 2022. The number of cases in the over 60 years age group has stayed below the numbers of cases seen for the less than 30 and 30-59 year age groups for the past 3 weeks. This lower number of cases could be related to the higher vaccination rates among older adults in Bridgeport or other factors that are unknown at this time. There continues to be a higher proportion of COVID-19 cases reported in individuals identifying as Hispanic in the beginning of March (70%). In all age groups, there are more cases in females than males, with the exception of the 0-9 year age group where there is a slightly higher number of cases in males since July 1, 2020. The number of new cases in male and females has decreased since February 21, from 25 to 12 in males and from 20 to 16 in females. These values continue to track closely with each other for the past 6 months.

DATA SOURCES

Connecticut Epidemiologic Disease Surveillance System