

Pequonnock River
 (Trumbull-Bridgeport)
 ~8,300 Trout stocked annually
 Updated: May 2013

Key to stocking points

- Regular with public access ●
- Private, but open to fishing ●
- Stocked under good conditions ●

Great Hollow Pond

Purdy Hill Rd

RT 25

Route - 111

Above and below dam

Above and below dam and foot bridge

Old Mine Park Road
bridge crossing

Down paved bike path.

Cascades below
highway

Riverside Drive

Whitney Ave. Bridge crossing

On side of road just on right by
split rail fence.

On right just before you
leave Riverside Drive

Whitney
Ave.

Path along stone wall to foot bridge
about 300 m past gate.

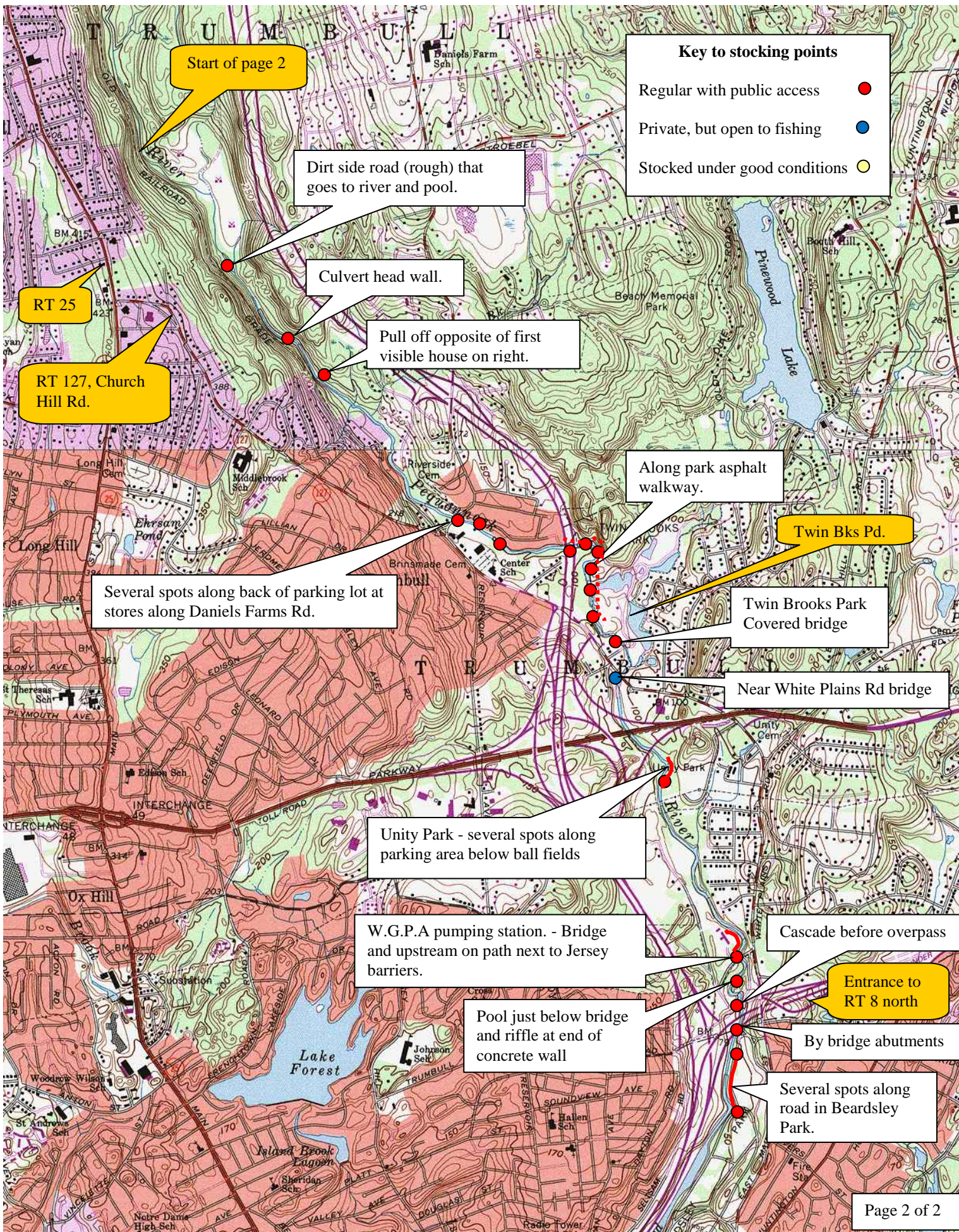
Path by culvert just
before turn-around

Several spots downstream where
road is close to river –

Turn-around
area on bike path

Well defined path after
turn-around in bike path,
and before stream pulls
away from bike path.

Printed from TOPO! ©1998 Wildflower Productions (www.topo.com)



Key to stocking points

- Regular with public access ●
- Private, but open to fishing ●
- Stocked under good conditions ●

Start of page 2

RT 25

RT 127, Church Hill Rd.

Dirt side road (rough) that goes to river and pool.

Culvert head wall.

Pull off opposite of first visible house on right.

Several spots along back of parking lot at stores along Daniels Farms Rd.

Along park asphalt walkway.

Twin Bks Pd.

Twin Brooks Park Covered bridge

Near White Plains Rd bridge

Unity Park - several spots along parking area below ball fields

W.G.P.A pumping station. - Bridge and upstream on path next to Jersey barriers.

Pool just below bridge and riffle at end of concrete wall

Cascade before overpass

Entrance to RT 8 north

By bridge abutments

Several spots along road in Beardsley Park.

Printed from TOPOI ©1993 Wildflower Productions (www.topoi.com)