



YOU'RE INVITED

Community Meeting

for the

Ash Creek Pedestrian Bridge Project

The Project Team

Project Administrator:

- **CITY OF BRIDGEPORT (Lead):**
 - **Office of Economic Development**
 - **Engineering Department**
- **TOWN OF FAIRFIELD:**
 - **Engineering Department**
 - **Conservation Commission**



Designer: BL Companies

- **Chad Perkoski, PE - Project Manager & Lead Bridge Engineer**
- **Dominick Celtruda, PLA – Lead Landscape Architect**

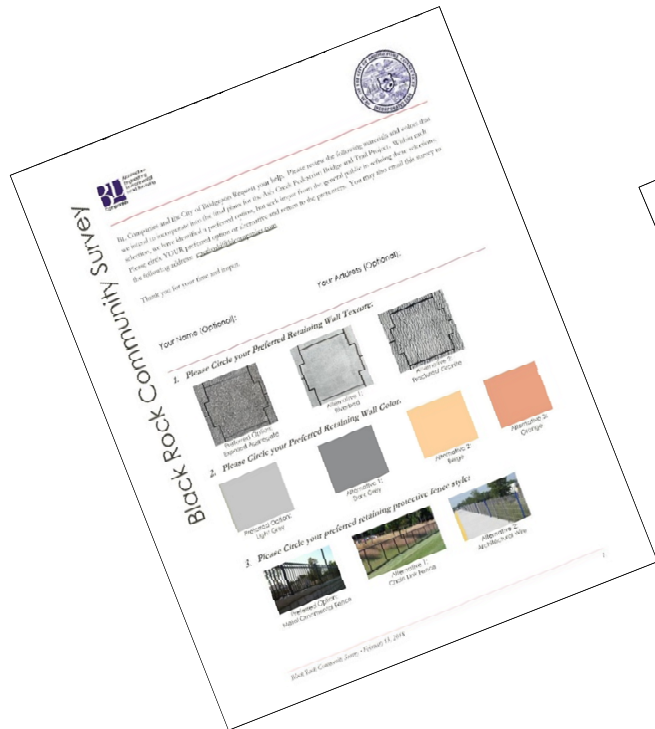


Public Engagement – To Date

- **Public Outreach Meeting (#1) Feedback (July 2016)**
 - Introduced project to the Community
 - Solicited input and feedback on the design
 - Concern of available space for Trail along the Ash Creek identified
 - Erosion concerns along eastern bank of Ash Creek recognized
- **Public Outreach Meeting (#2) Feedback (February 2017)**
 - Provided a project update to the community
 - Solicited input and feedback on the design
 - Recognized Importance of Safety
 - Established Project Limits
 - Solidified Bridge Location
 - Introduced Fox Street Chicane Concept
 - Water inundation at Canfield / Fox intersection
 - Keep it subtle don't overwhelm the site with materials
 - Utilize/Incorporate actual Black Rock

Public Engagement

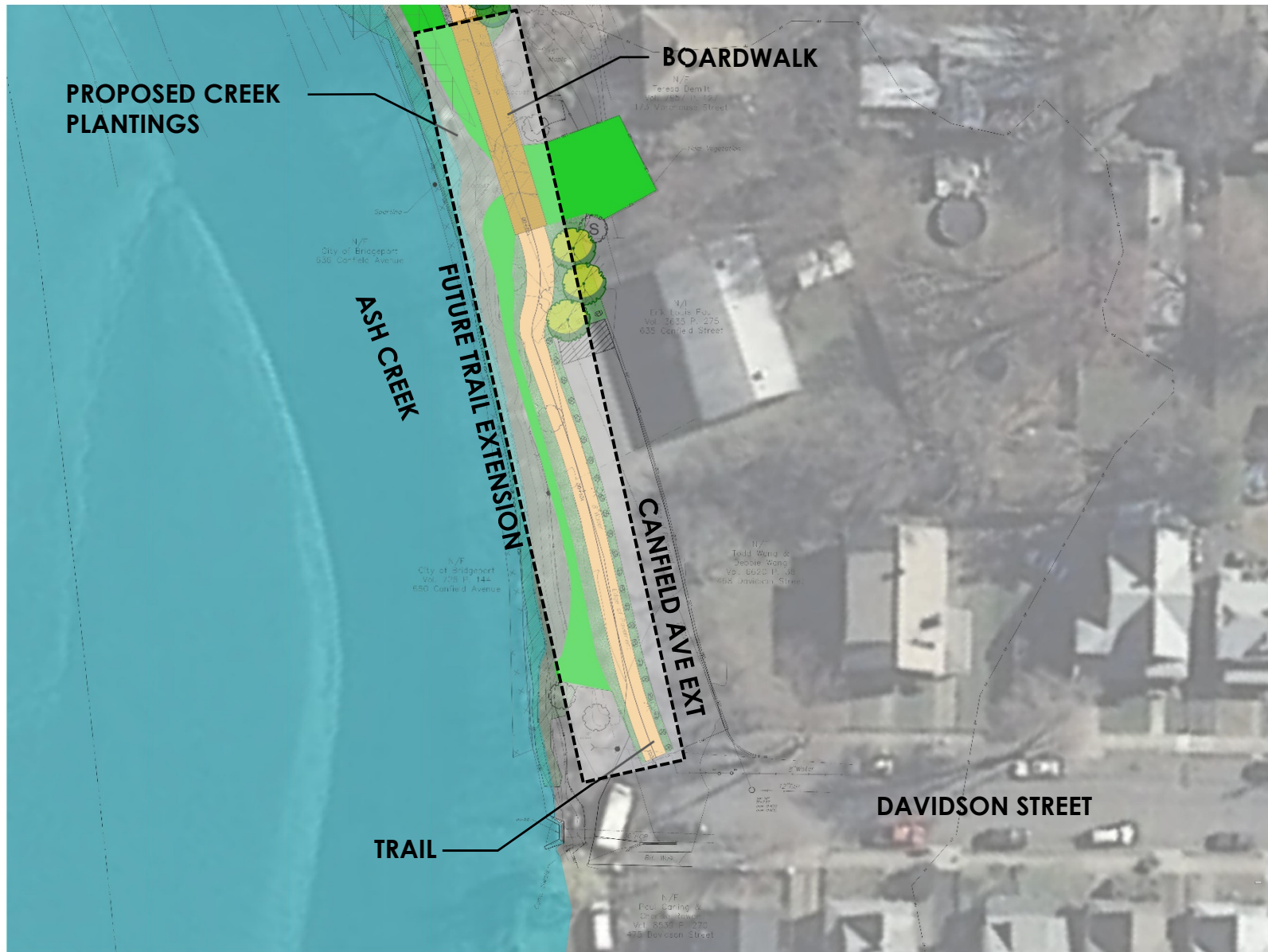
- **Public Outreach Meeting (#3) - Tonight**
 - Provide a project update to the community
 - Solicit input and feedback on the design
 - Solicit feedback on various project elements



Proposed Improvements - Index Plan



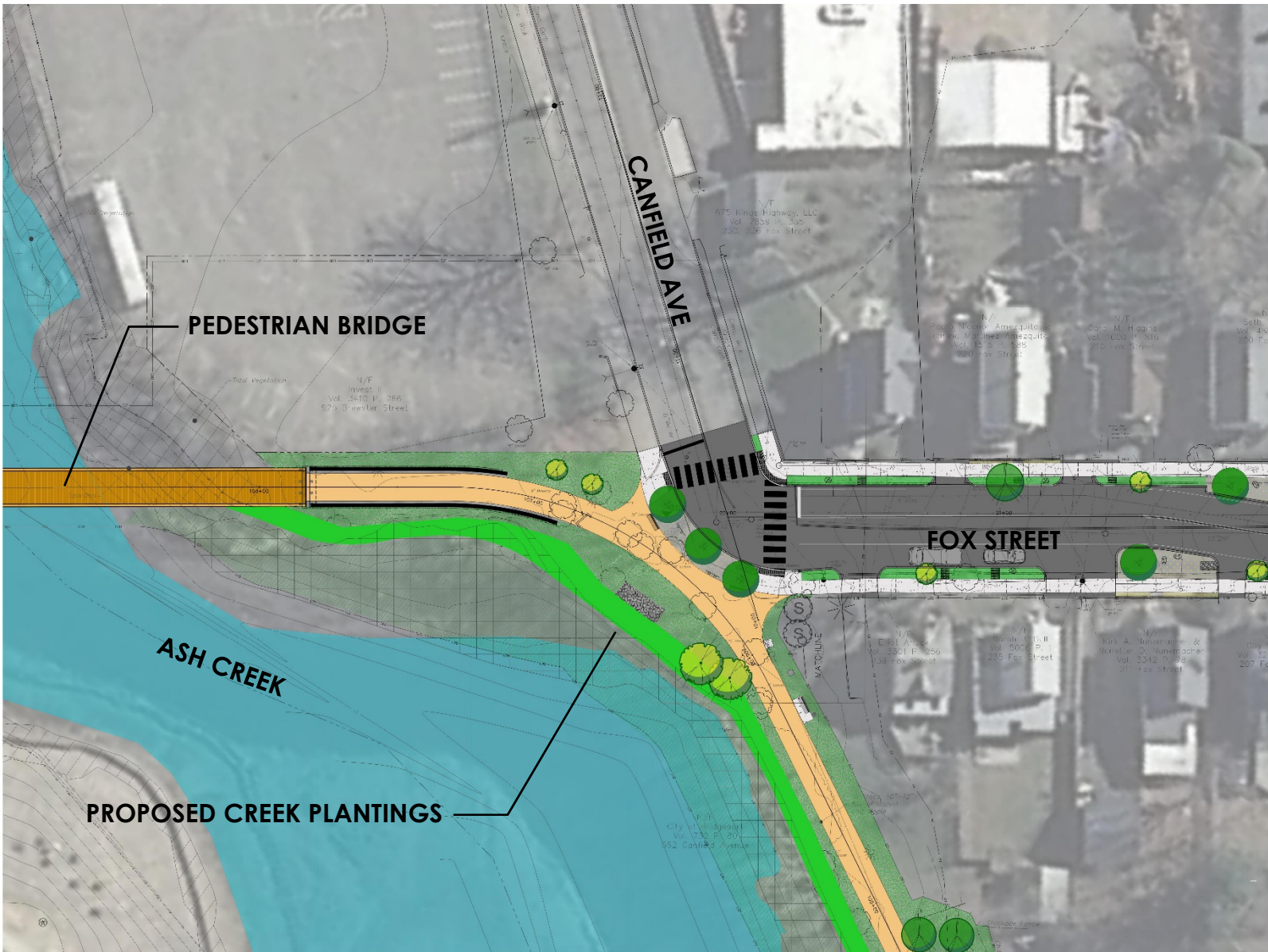
Ash Creek Pedestrian Bridge & Trail Improvements



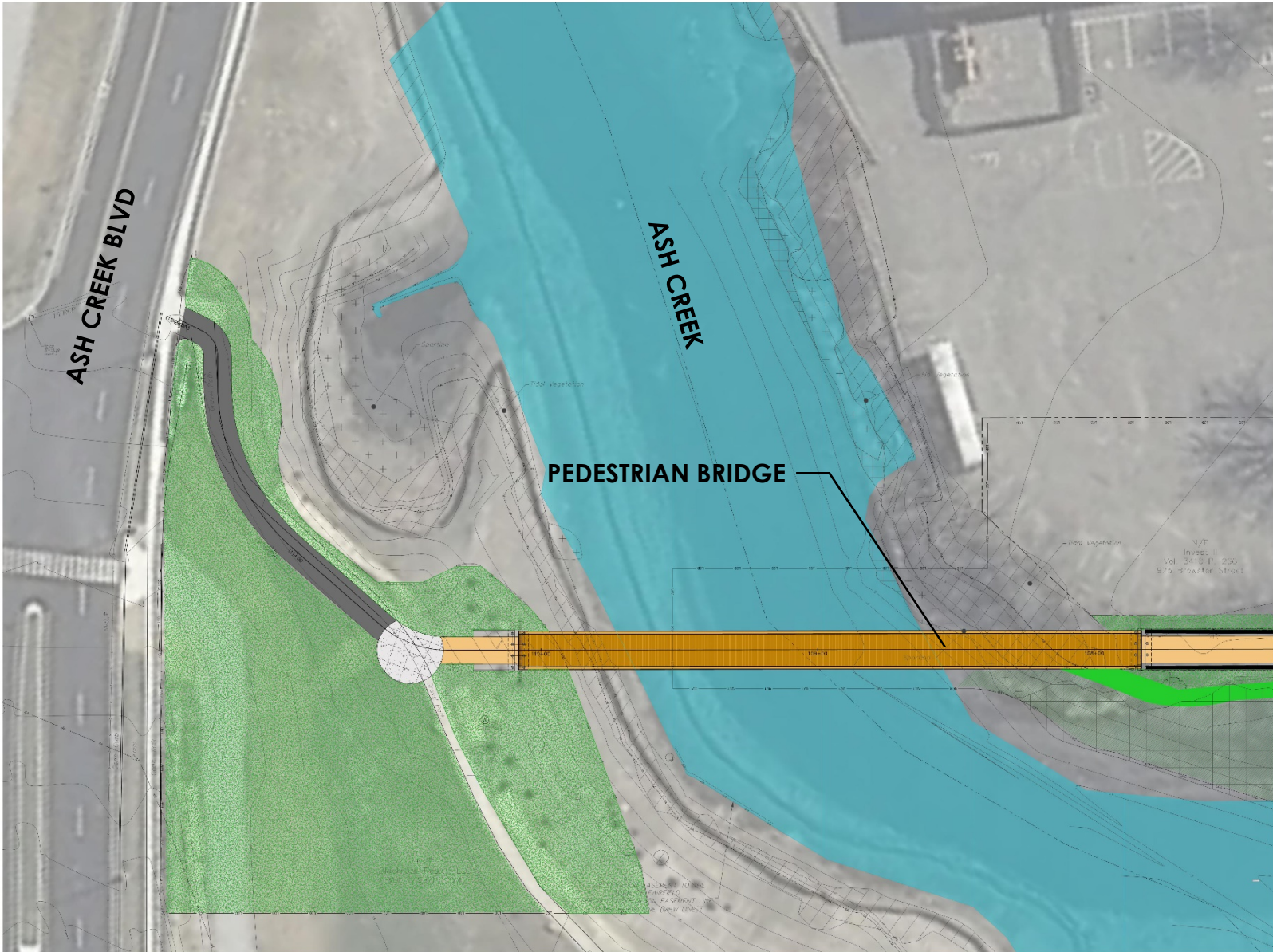
Ash Creek Pedestrian Bridge & Trail Improvements



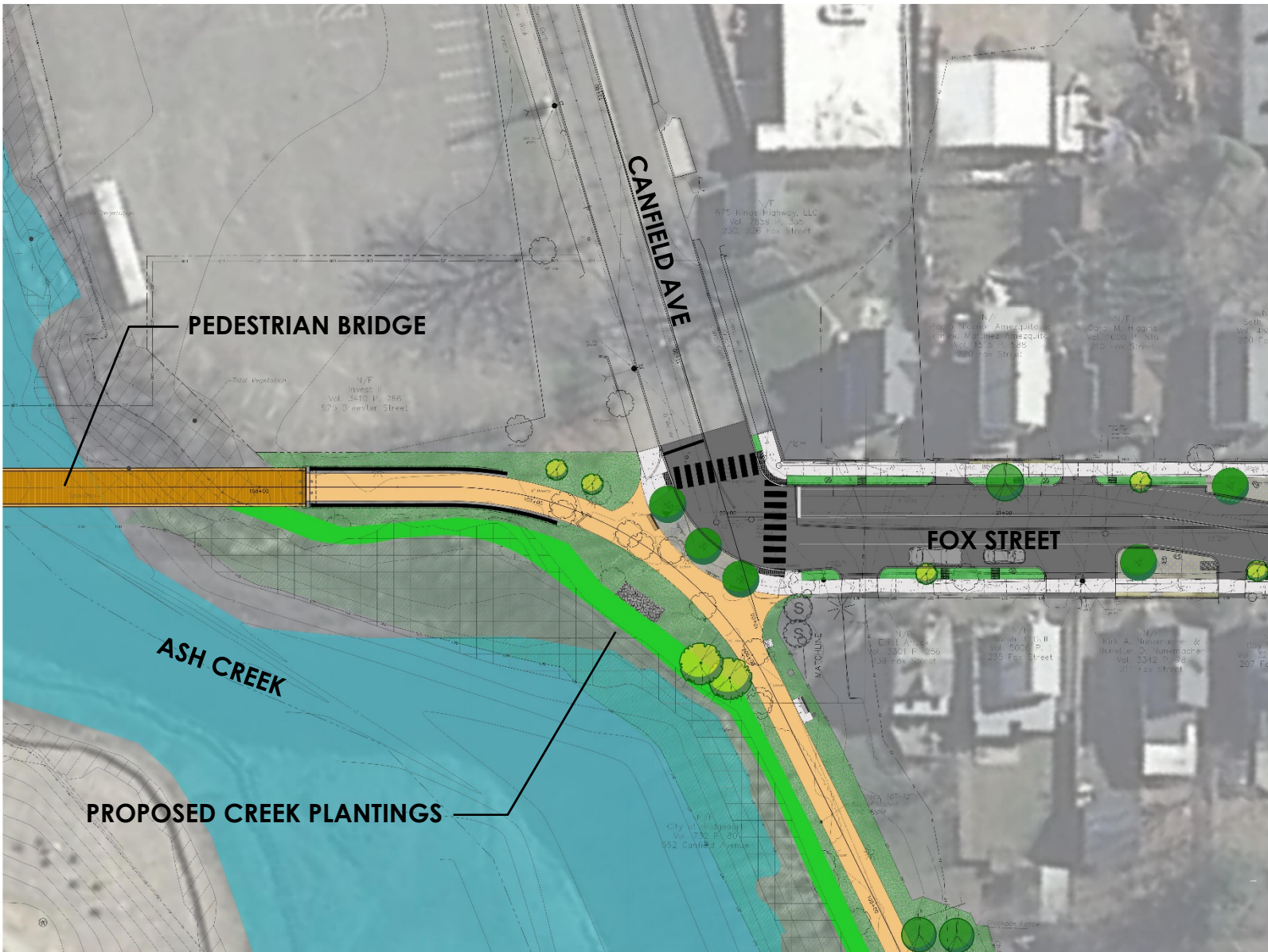
Ash Creek Pedestrian Bridge & Trail Improvements



Ash Creek Pedestrian Bridge & Trail Improvements



Ash Creek Pedestrian Bridge & Trail Improvements



Fox Street Improvements



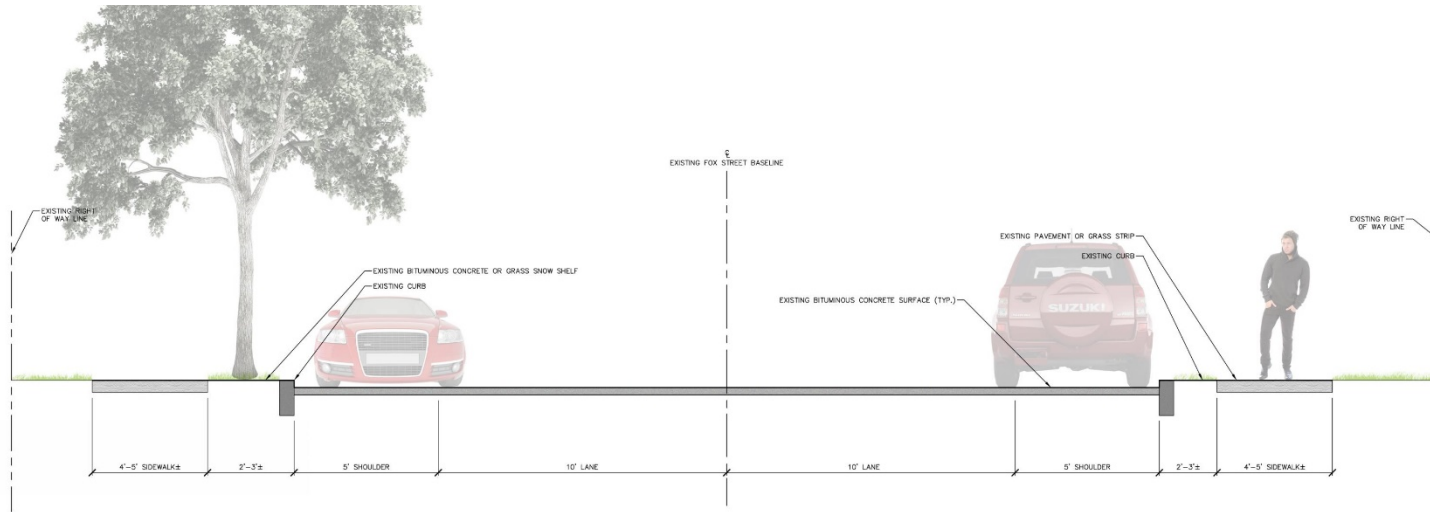
Fox Street Improvements



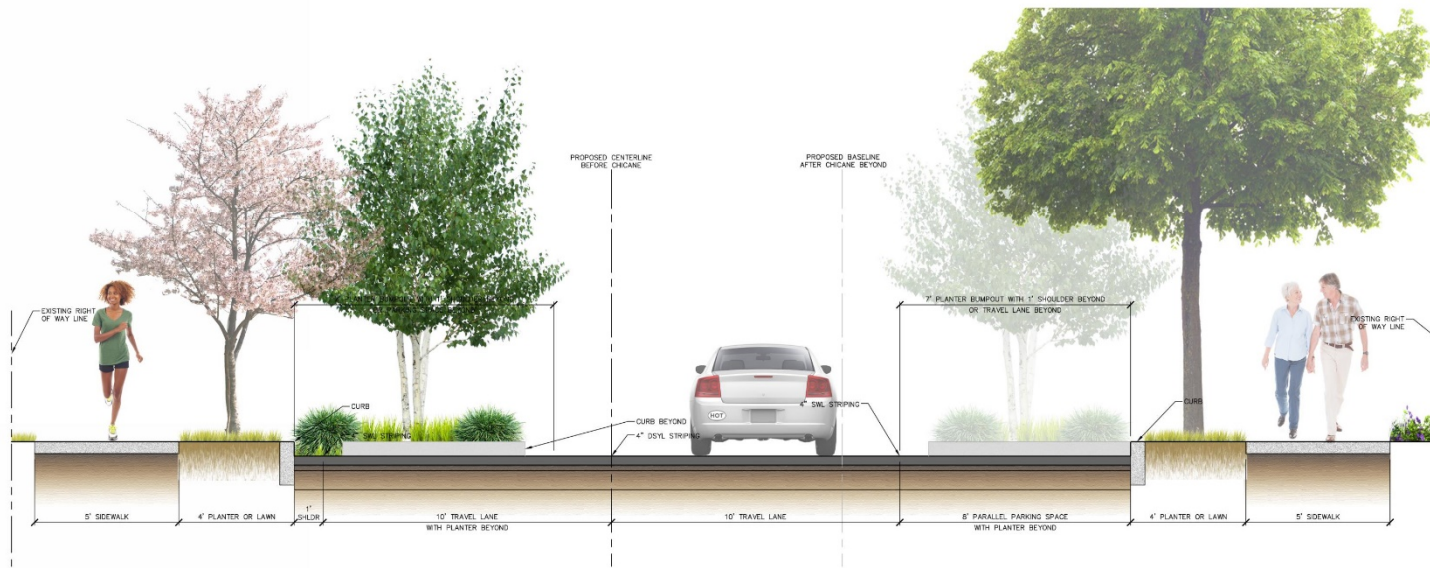
Fox Street Improvements



Fox Street Improvements



EXISTING FOX STREET TYPICAL SECTION



PROPOSED FOX STREET TYPICAL SECTION A

Material Board

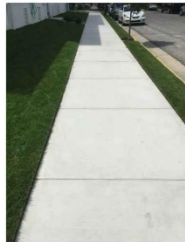
PRECEDENT - SITE PLAN IMAGES



STEPPING STONES



BLACK REGENCY BOULDER



CONCRETE



CONCRETE CURB



SEATING



FLEXI-PAVE



FLEXIPAVE TRAIL



TRASH RECEPTACLE



TRAIL LIGHT



WOOD GUIDE RAIL



WOOD PRIVACY FENCE

FOX STREET PEDESTRIAN IMPROVEMENTS AND ASH CREEK PED. BRIDGE • Bridgeport, Connecticut

Material Board

PRECEDENT - VEGETATION IMAGES



PIN OAK

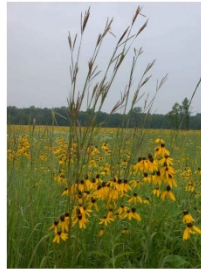


RED MAPLE

TRAILSIDE TREES



SERVICEBERRY



ENVIRONMENTAL SEED MIX



CREEK PLANTING INSPIRATION



RED CEDAR



MIXED NARCISUS BULBS



WILLOW OAK



LITTLE BLUESTEM



COASTAL SWEET PEPPER BUSH



GROUNDSEL BUSH



PRAIRIE DROPSEED



FLOWERING CHERRY

FOX STREET TREES



PRAIRIE DROPSEED



NORTHERN BAYBERRY



HIGH TIDE BUSH

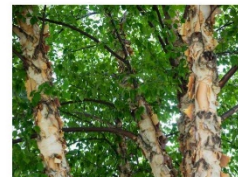


DAYLILY

FOX STREET PERENNIAL BEDS



FOX STREET PLANTER INSPIRATION



RIVER BIRCH

STREET PLANTERS



SALT HAY GRASS



SMOOTH CORDGRASS

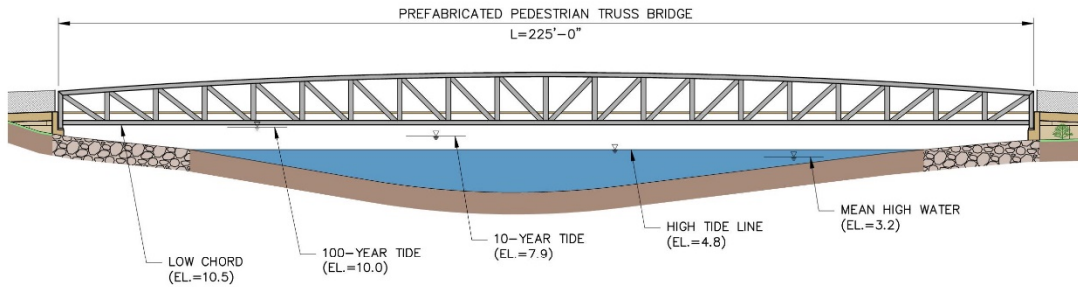
CREEK PLANTINGS

FOX STREET PEDESTRIAN IMPROVEMENTS AND ASH CREEK PED. BRIDGE • Bridgeport, Connecticut



Material Board

Pedestrian Bridge Details



Elevation



Boardwalk Structure



Galvanized Steel



Aesthetic Fascia Members



Bridge Lighting



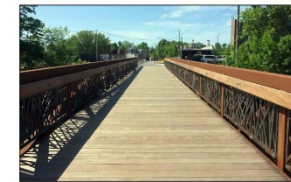
Painted Steel



Weathering Steel



Aesthetic Truss Members



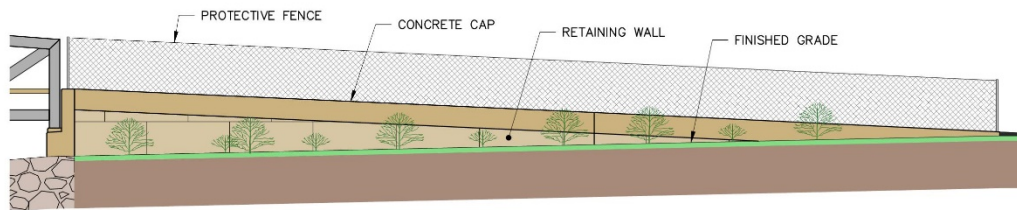
Custom Pickets

Bridge Finish Options

Architectural Features

Material Board

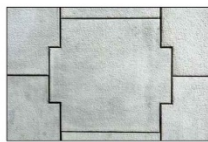
Retaining Wall Details



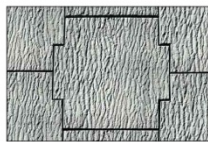
Elevation



Exposed Aggregate



Riverbed



Fractured Granite

Wall Facing Textures



Light Grey



Dark Grey



Beige

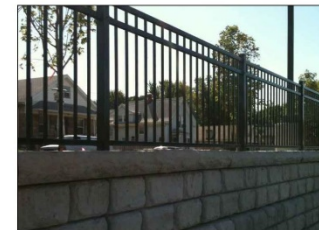


Salmon

Wall Facing Colors



Black Polyvinyl Chain Link Fence



Ornamental



Architectural Wire

Protective Fence Options



Thank You - Questions