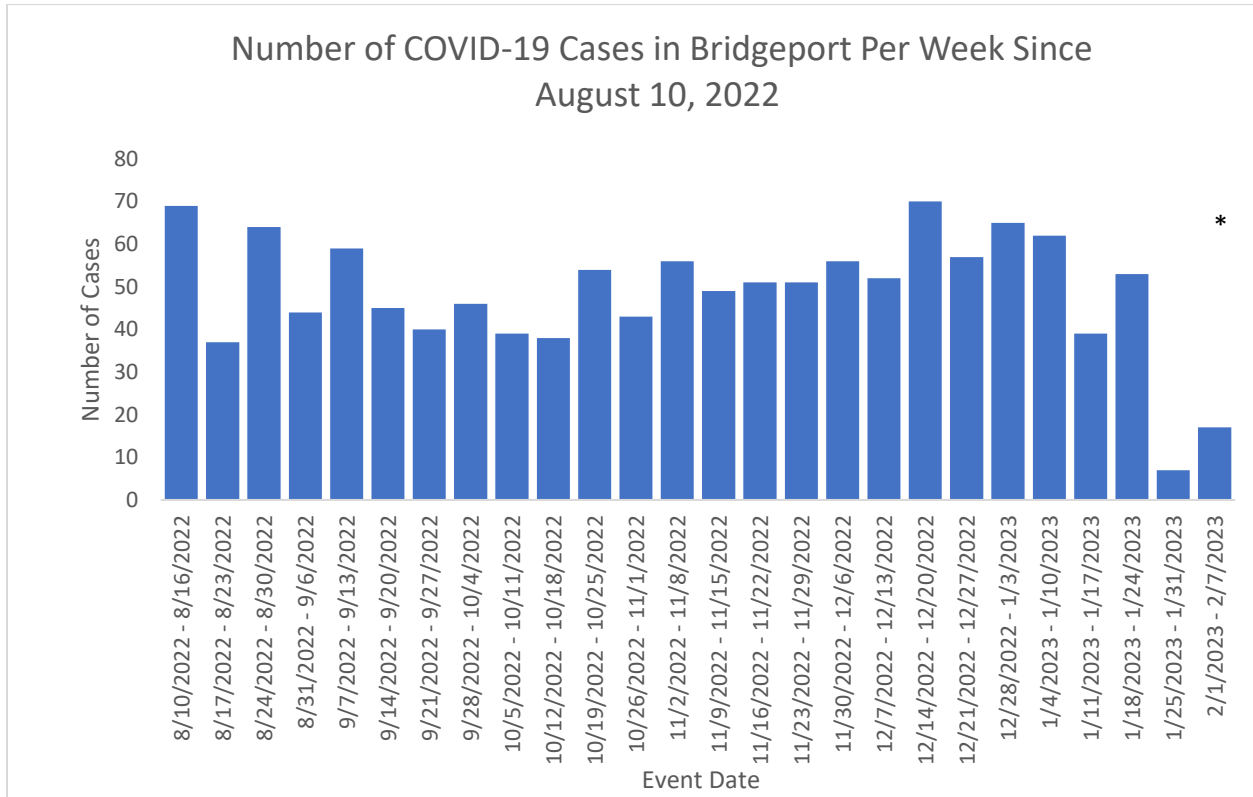
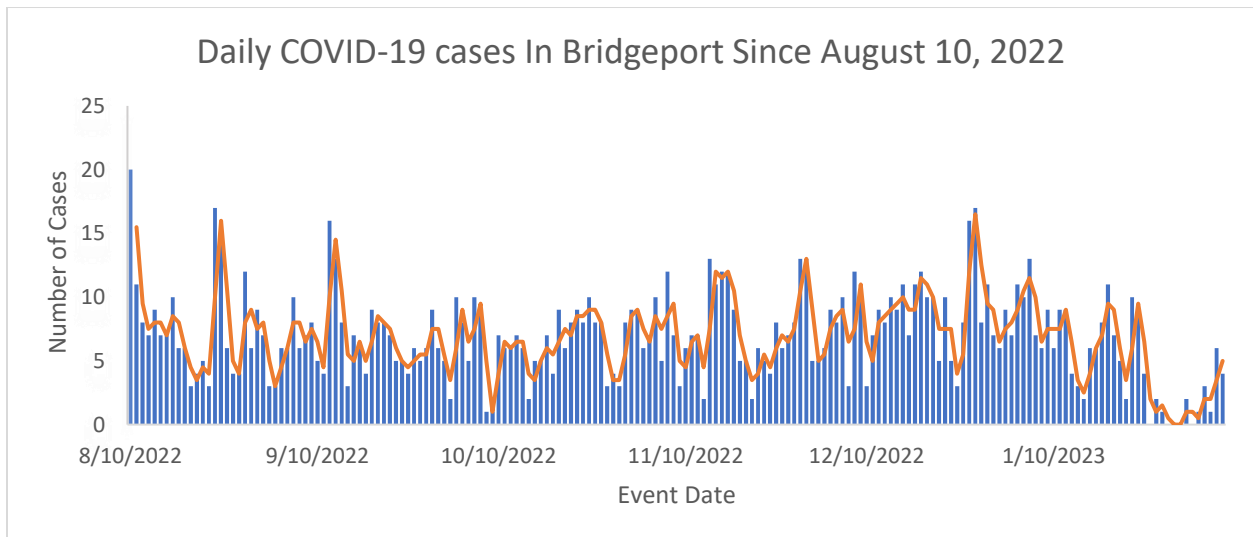




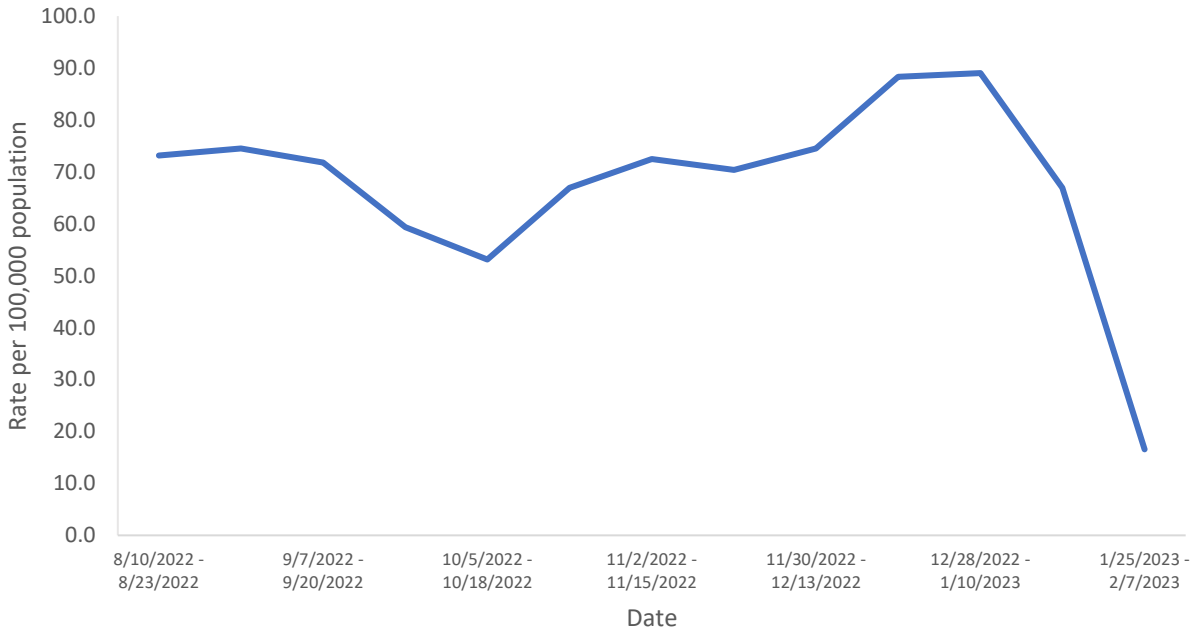
BRIDGEPORT COVID-19 EPIDEMIOLOGY REPORT AS OF 02/07/2023



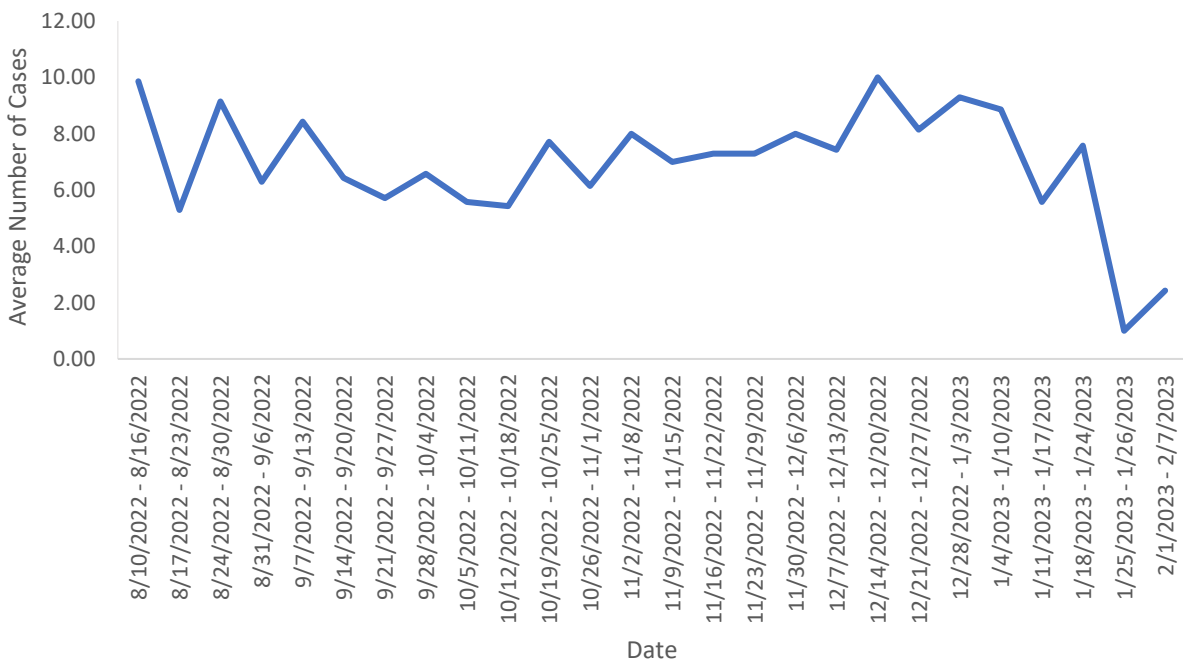
* Data are incomplete



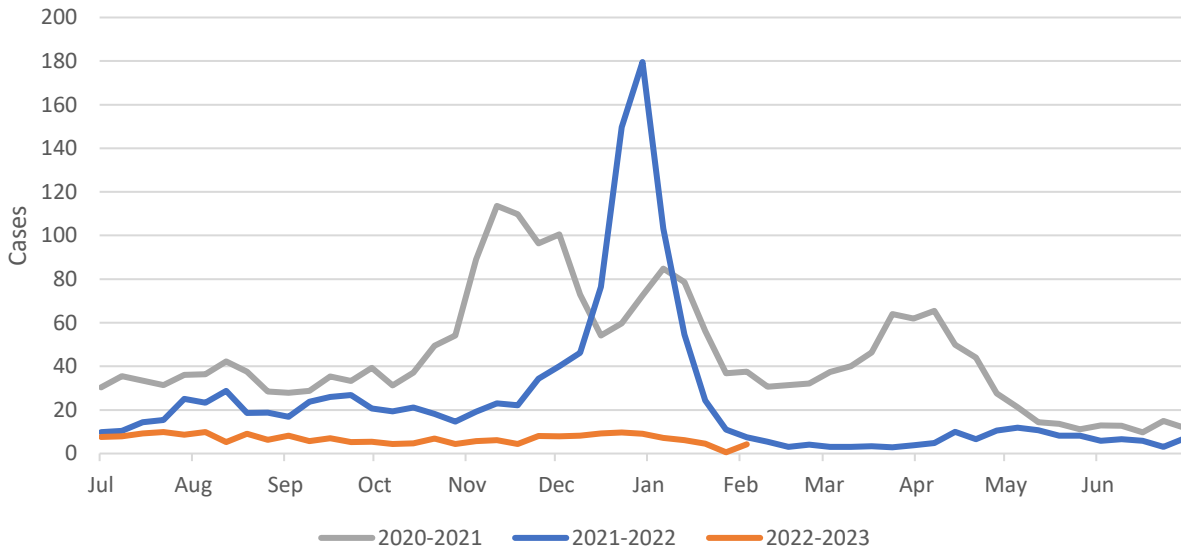
Bridgeport Bi-weekly COVID-19 Incidence Rate Per 100,000 Since August 10, 2022



Seven Day Average COVID-19 Cases in Bridgeport Since August 10, 2022

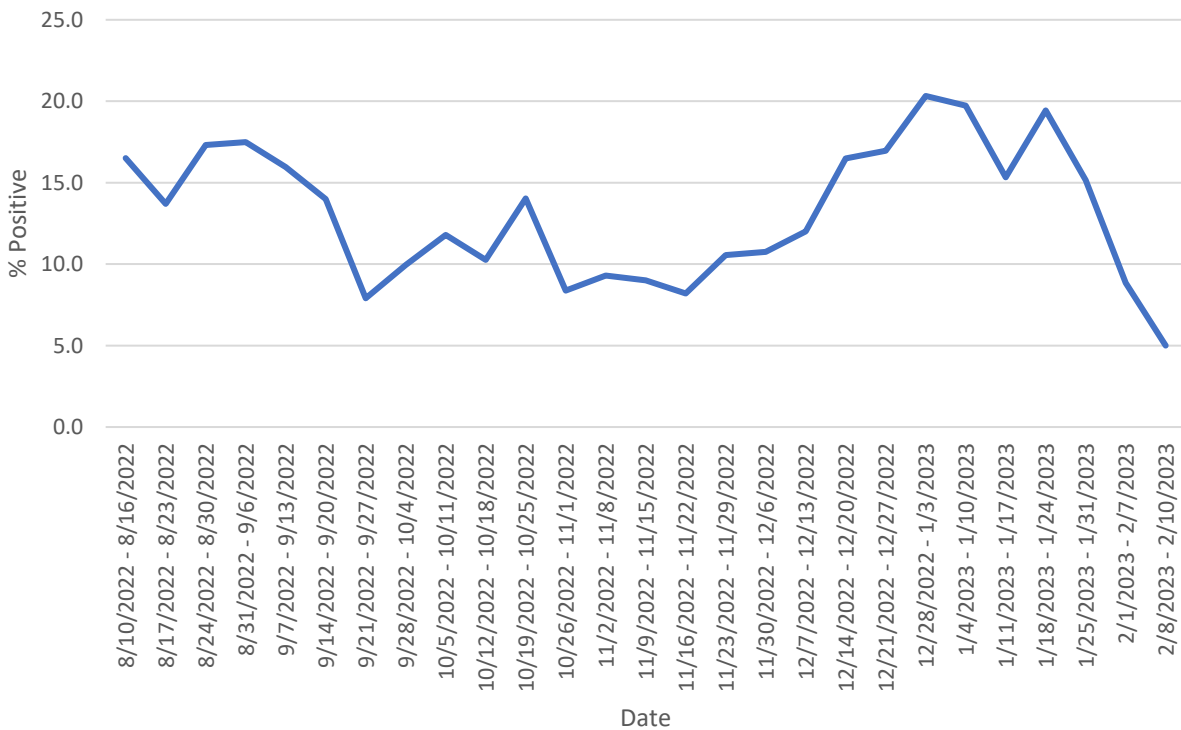


Weekly Average COVID-19 Cases for Bridgeport, CT Since July 1, 2020

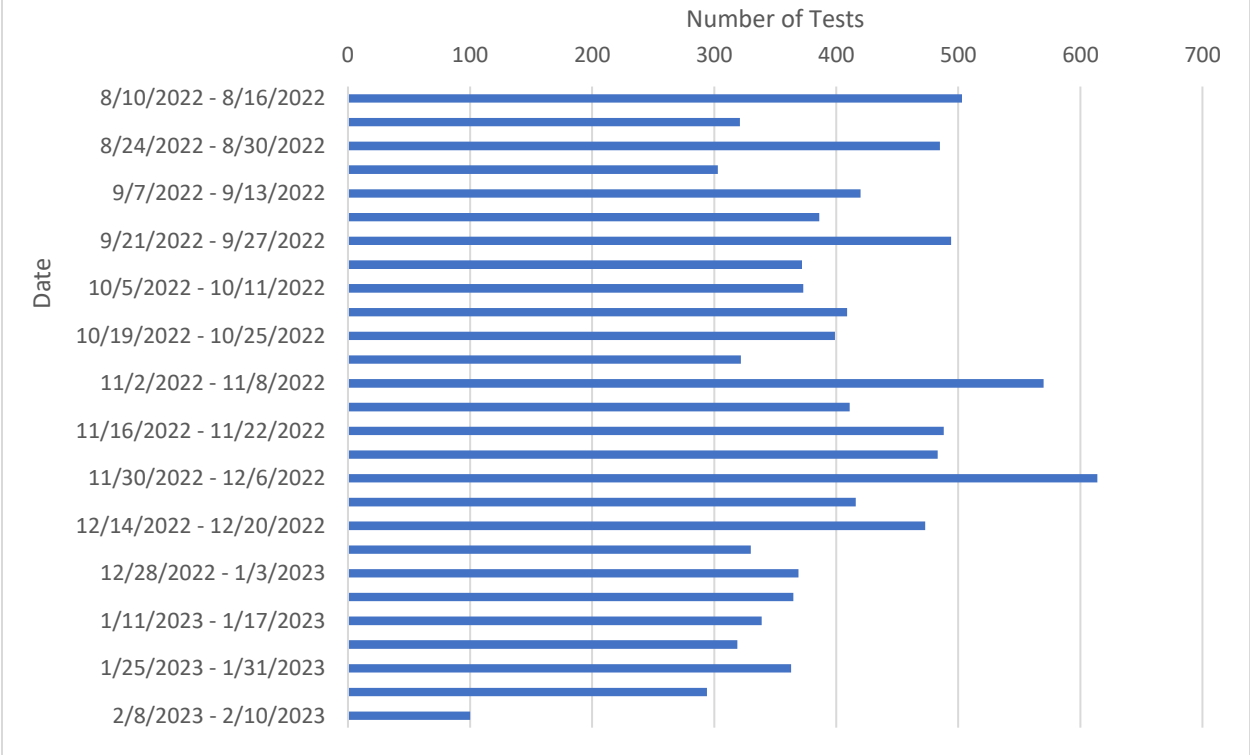


TESTING & TEST POSITIVITY

Seven Day Rolling Average Percentage Positive Tests for COVID-19 in Bridgeport Since August 10, 2022

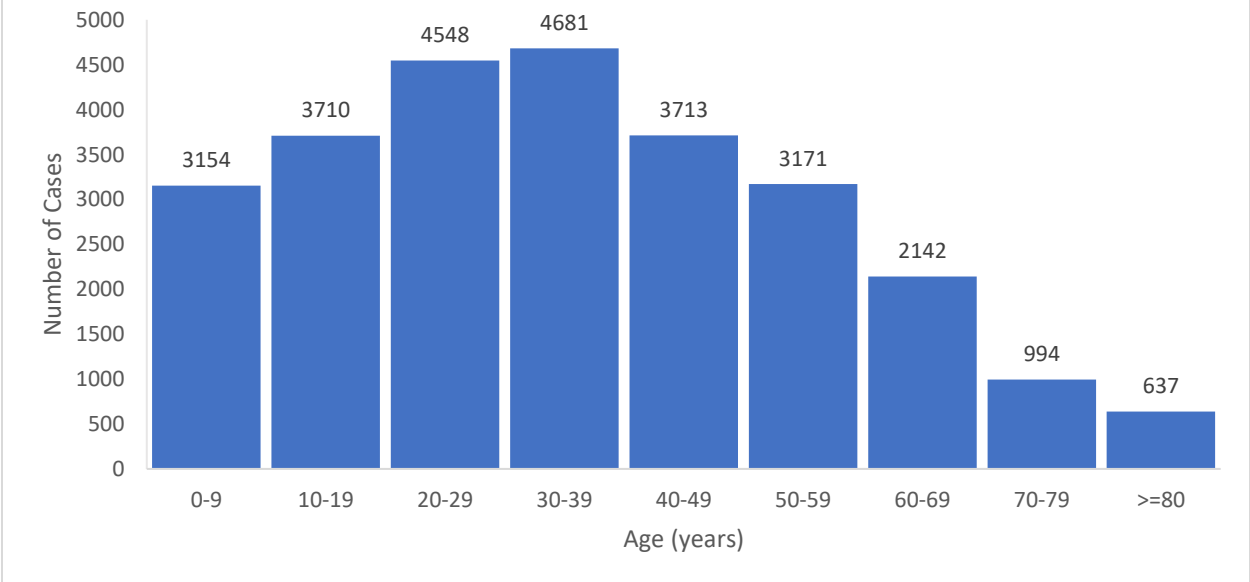


Total COVID-19 Tests Per Week in Bridgeport Since August 10, 2022

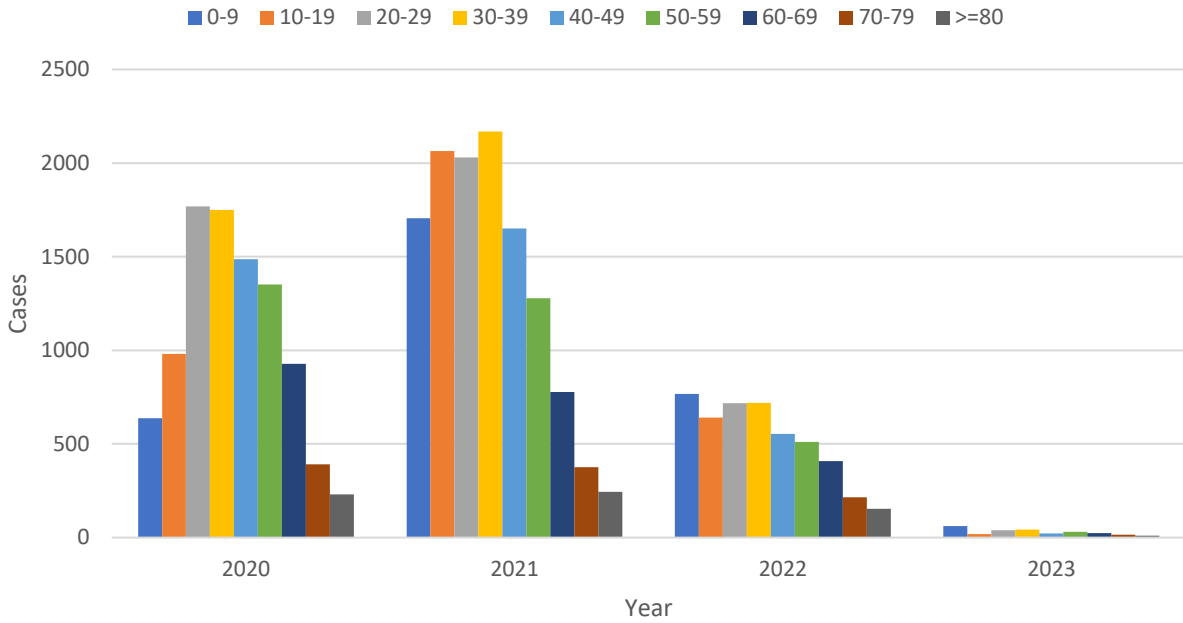


CASES BY AGE

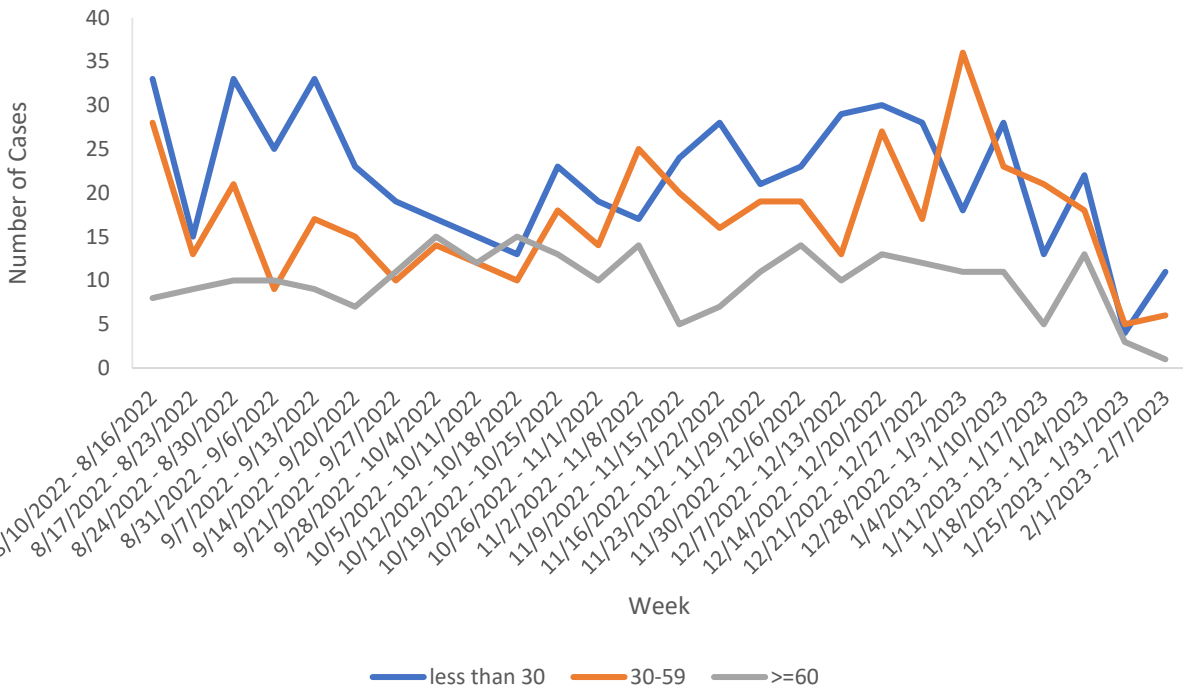
Number of COVID-19 Cases in Bridgeport by Age Group Since July 1, 2020



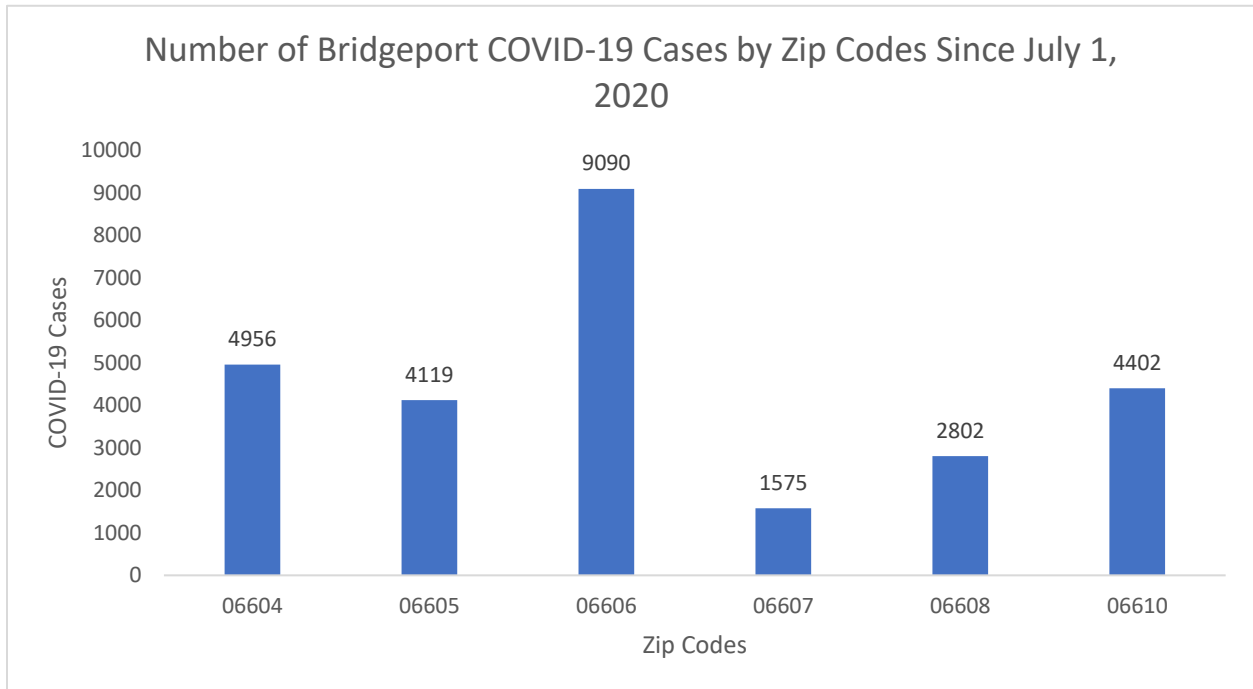
Yearly Number of COVID-19 Cases in Bridgeport by Age (in years)
Since July 1, 2020



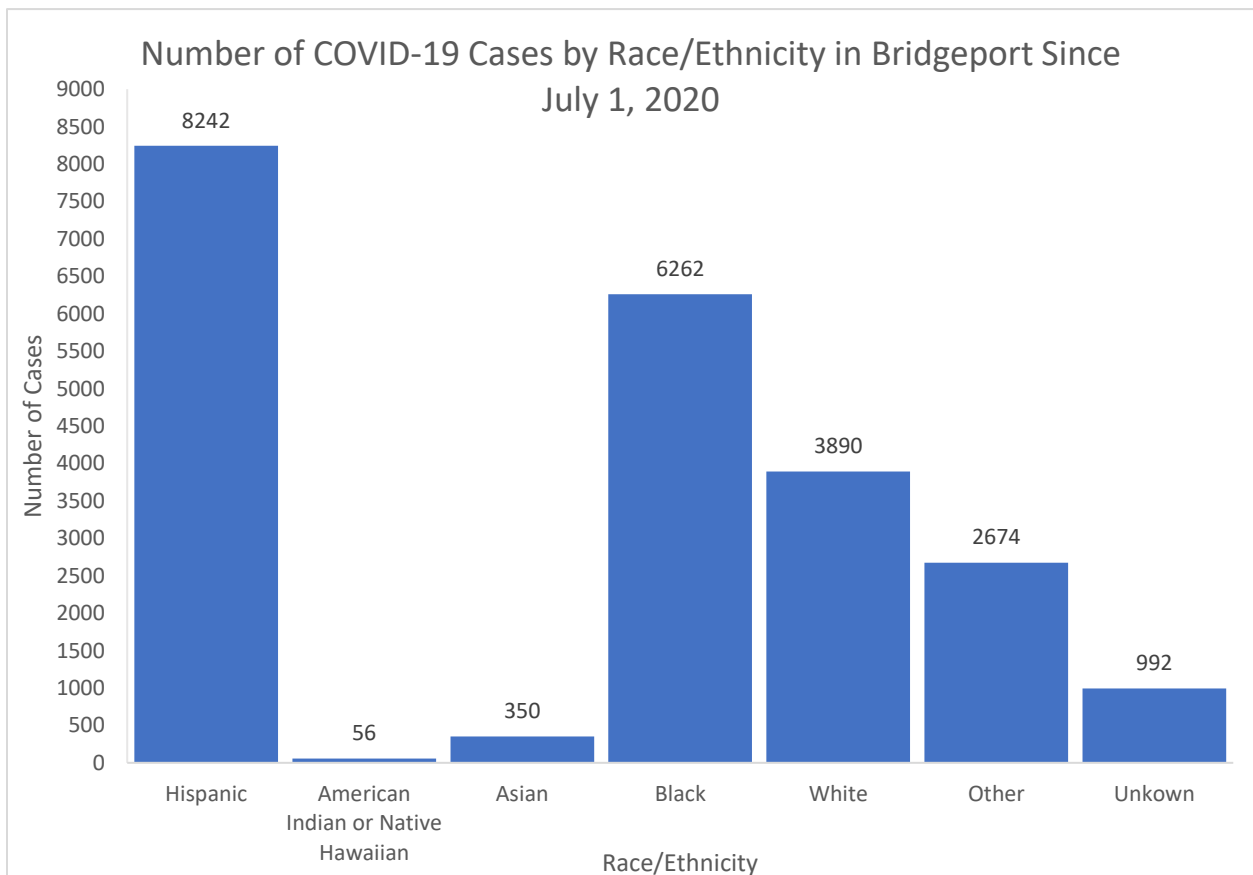
Number of COVID-19 Cases per Week by Age Group in
Bridgeport
Since August 10, 2022



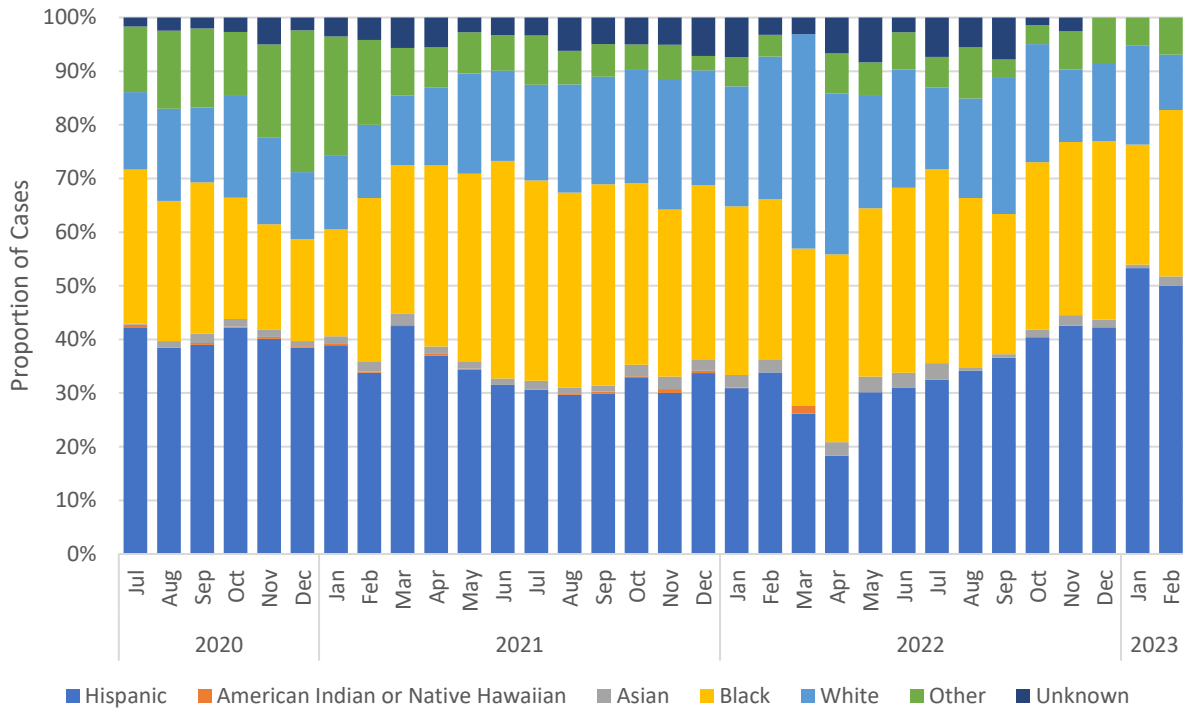
CASES BY ZIP CODE



CASES BY RACE/ETHNICITY

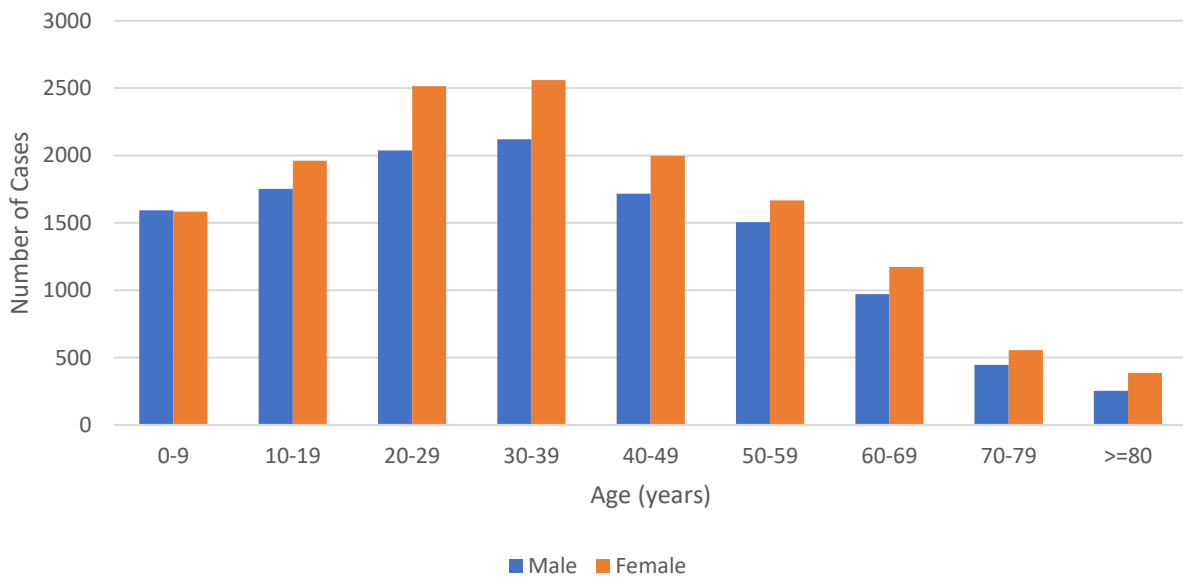


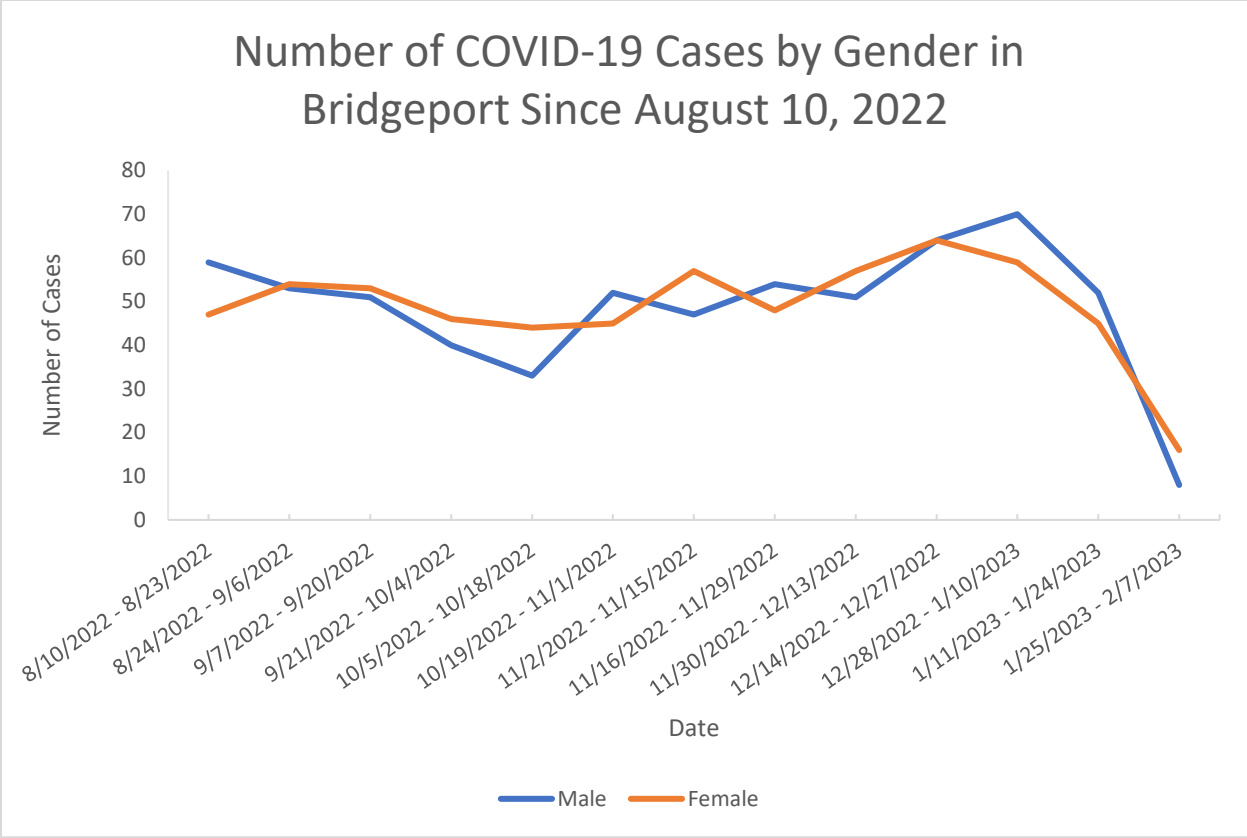
Monthly Proportion of COVID-19 Cases by Race/Ethnicity Since July 1, 2020



CASES BY GENDER

Number of COVID-19 Cases by Gender, Grouped by Age, Since July 1, 2020





SUMMARY

Over the past two weeks Bridgeport has had a precipitous drop in COVID-19 cases reported. As this is an extreme outlier compared to recent and expected data, it is more likely that there has been an error in reporting though CTEDSS or delayed reporting. CTEDSS recently underwent an update to their interface system, which may have contributed to errors and delays. Knowing that the data for this two-week period is suspect, it is impossible to draw accurate conclusions from it.

Due to the large number of cases recorded since July 1, 2020, this dip in cases has not affected the reporting of total number of cases per age group, by zip code, or by race/ethnicity. 30-39 year olds continue to have the highest number of cases by age group, the 06606 has the highest number of cases per zip code, and the highest number of cases continues to be in people that identify as Hispanic.

When the data is collected for the subsequent reporting period, any delay in case reporting for this time period should be resolved and the absent data will be added to the next report.

DATA SOURCES

Connecticut Epidemiologic Disease Surveillance System